



General Description

Smartflow® stainless steel manifolds are formed and welded from 304 stainless steel. The manifolds are 100% leak tested for quality assurance before shipping.

Smartflow stainless steel manifolds are excellent for high-flow applications where durability is important. Manifold bodies are made from 1-1/2" or 2" square tube to allow maximum flow. Custom modifications are easily handled to provide the exact configuration you need.

Features & Benefits

- Welded construction ensures manifold strength and leak-tight integrity.
- 304 Stainless steel material provides excellent resistance to corrosion.
- Different port size options enable connection flexibility.
- Brass end plug is included for customer convenience.
- Pre-drilled mounting holes make the manifolds ready to install.

Specifications

Material..... 304 Stainless Steel
Inlet Size..... 1", 1-1/2" NPT (Female)
Port Size..... 1/4", 3/8", 1/2", 3/4" and
1" NPT (Female)

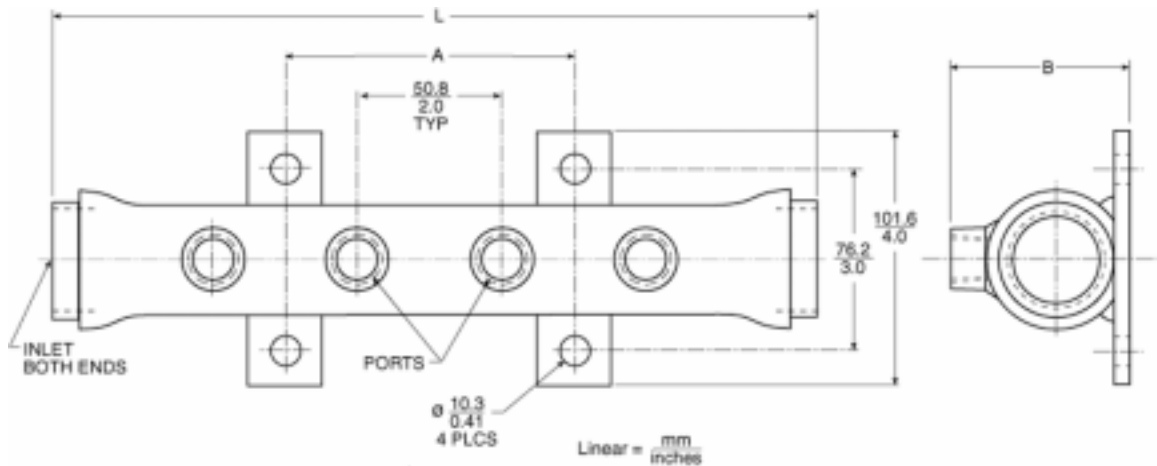
Temperature
Rating..... 250°F (121°C)

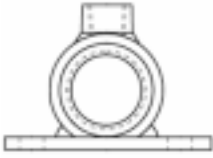
Maximum Working Pressure Ratings

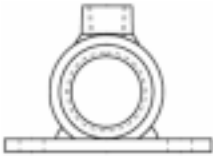
Gas
(air, inert gas)..... 125 psig
Liquid
(hydraulic oil, water,
benign fluids)..... 250 psig

Each Manifold Includes:

- NPT female threads both ends.
- One threaded brass end plug.
- Specified number of NPT ports.
- Mounting bracket.



	1" Stainless Steel Manifold 1" Inlet 3/8" Ports						
	# Ports	Part Number	Length L	Width	Mt. Hole A	Height B	Price
	4	8SS-4-3-A	11.25	4.0	4.0	2.5	187.00
	6	8SS-6-3-A	15.25	4.0	8.0	2.5	224.00
	8	8SS-8-3-A	19.25	4.0	12.0	2.5	260.00
	12	8SS-12-3-A	27.25	4.0	20.0	2.5	333.00

	1-1/2" Stainless Steel Manifold 1-1/2" Inlet 1/2" Ports						
	# Ports	Part Number	Length L	Width	Mt. Hole A	Height B	Price
	4	12SS-4-4-A	11.75	4.0	4.0	3.0	238.00
	6	12SS-6-4-A	15.75	4.0	8.0	3.0	276.00
	8	12SS-8-4-A	19.75	4.0	12.0	3.0	313.00
	12	12SS-12-4-A	27.75	4.0	20.0	3.0	388.00