

Solid State Relays



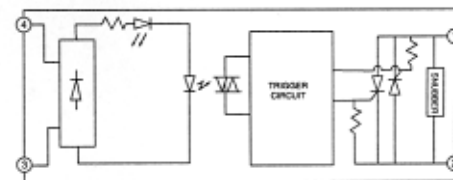
RSS Series - Panel Mount Solid State Relays 10, 25, 50, 75, 90A Current Ratings 48V AC to 660V AC Output Ratings

Key Features:

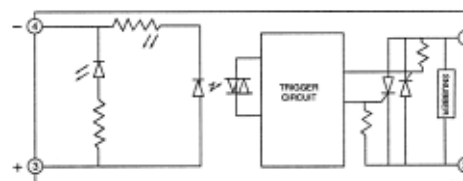
- Input status LED indicator.
- Dual SCR output.
- Direct bond copper substrate.
- Internal transient protection - built-in snubber.
- Photo isolation.
- 1200 volt blocking voltage.
- 4000 volt optical isolation.
- Zero voltage turn-on.
- 100% tested at rated current.
- High surge capability.

DC Models				
Part Number	Max Current	Line Voltage	Input Voltage	Price
RSSDN-10A	10A	48 - 660 VAC	4 - 32 VDC	22.50
RSSDN-25A	25A	48 - 660 VAC	4 - 32 VDC	23.75
RSSDN-50A	50A	48 - 660 VAC	4 - 32 VDC	36.25
RSSDN-75A	75A	48 - 660 VAC	4 - 32 VDC	57.50
RSSDN-90A	90A	48 - 660 VAC	4 - 32 VDC	67.00
AC Models				
Part Number	Max Current	Line Voltage	Input Voltage	Price
RSSAN-10A	10A	48 - 660 VAC	90 - 280 VAC	29.75
RSSAN-25A	25A	48 - 660 VAC	90 - 280 VAC	31.00
RSSAN-50A	50A	48 - 660 VAC	90 - 280 VAC	40.00
RSSAN-75A	75A	48 - 660 VAC	90 - 280 VAC	62.75
RSSAN-90A	90A	48 - 660 VAC	90 - 280 VAC	71.50

Input Specifications		
Series	RSSDN	RSSAN
Voltage Range	4 to 32V DC	90 to 280V AC
Input Current	Current Regulated (10mA)	
Pick Up Voltage	4V DC	90V AC
Drop Out Voltage	1V DC	10V AC
Dielectric Strength	4000 RMS (min)	4000 RMS (min)
Capacitance	8pF	8pF
Rev. Voltage Protection	Yes	N/A



AC Input Equivalent Circuit



DC Input Equivalent Circuit

Output Specifications					
Current	10A	25A	50A	75A	90A
1-Cycle Surge Current	150A	300A	750A	1000A	1200A
1-Second Surge Current	30A	75A	150A	225A	300A
Minimum Holding Current	50mA	50mA	100mA	100mA	100mA
Voltage Drop at Rated Current	1.6V (maximum)				
Voltage Range	48 - 660V AC				
Contact	1 Form A (SPST-NO)				
Over Voltage Rating	1200 PIV				
Frequency Range	47 to 80Hz				
Off-State Leakage at Rated Voltage	20mA (maximum)				
Turn-On Time	1/2 cycle @ 60Hz				
Turn-Off Time	1/2 cycle @ 60Hz				
Zero Voltage Switching	Yes				
Static DV/DT	200V/μsec				
Commutating DV/T	Snubbed for 0.5 power factor at rated load				

