

Slide Retainer & Limit Switch

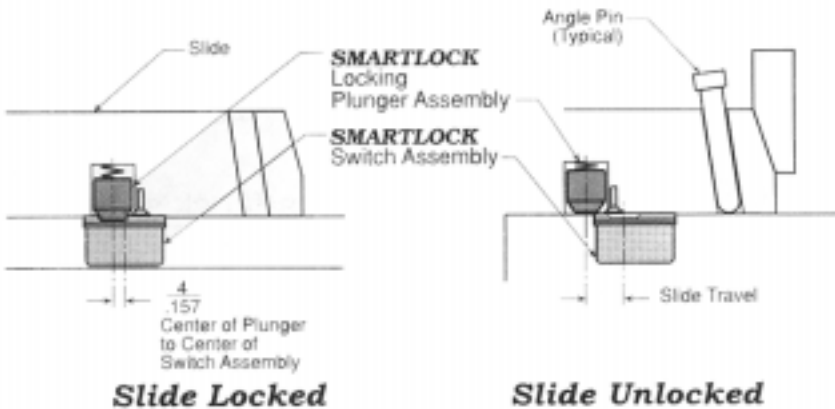
General Description

Smartflow® Smartlock® slide retainer and limit switch is designed for injection molders to provide switching and a slide detent in one unique package. The Smartlock® locking function prevents premature slide movement during molded part ejection while the SPDT switch is simultaneously actuated. The Smartlock® slide retainer and limit switch has been tested for reliability over 10 million cycles without failure. Two or more switches may be used for larger molds or mold with multiple slides. Increased safety and prevention of mold damage result when the Smartlock® slide lock and limit switch is installed in the mold.

Specifications

Break Away Force..... 17 to 27 lbs. (Adjustable)
 Electrical..... 250VAC / 28VDC
 4 Amps inductive, 5 Amps resistive

Operating Temperature
 Standard Model SL-222..... 175°F max (79.4°C max)
 High Temp Model SL-291..... 250°F max (121°C max)



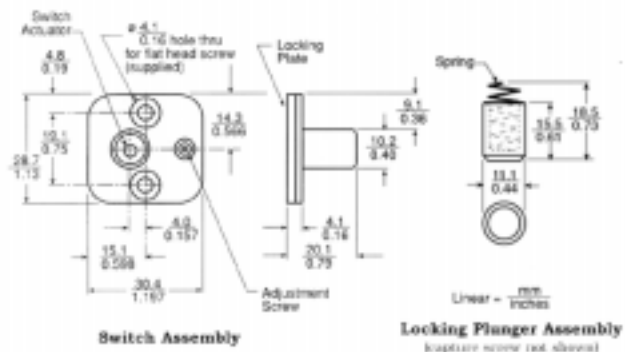
Materials

- Switch Assembly Body
 - Fiberglass reinforced nylon.
- Locking Plate
 - Hardened steel.
- Locking Plunger Assembly
 - Hardened steel.
- Wire Leads
 - 22 ga. stranded, 3 conductor, shielded cable, 6 ft. long, ends stripped and tinned.

Features and Benefits

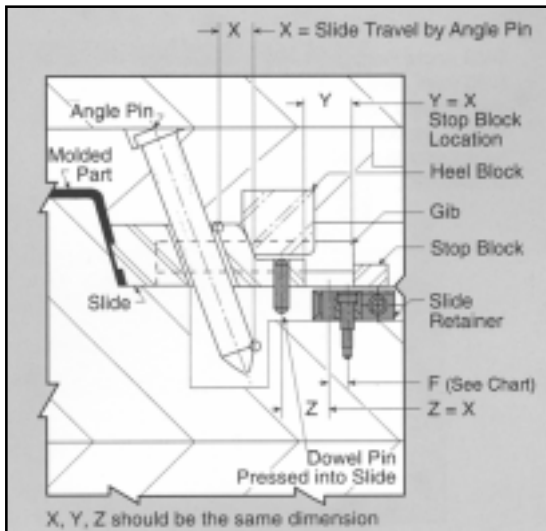
- Over 10 million cycle life provides long dependable service.
- 17-27 pounds holding force: adjustable for optimum operation.
- 175°F (79.4°C) standard temperature rating allows installation into most molding applications.
- 250°F (121°C) high temperature unit provides additional application flexibility.
- Superior flush mount switch shielded from damage by mounting inside a protective milled pocket.
- Stripped and tinned 6 ft. wire leads make the switch ready to install without modification.
- Included mounting screws and wire clips help install the Smartlock® switch easily.

Part Number	Description	Price
SL-222	Standard Smartlock	124.00
SL-291	High Temp. Smartlock	135.00

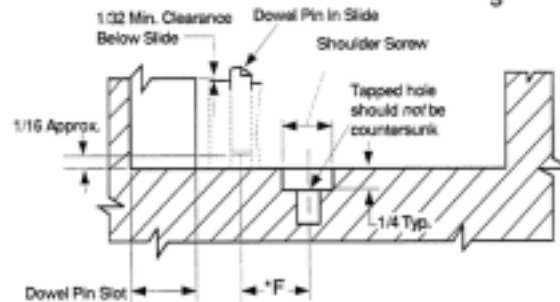
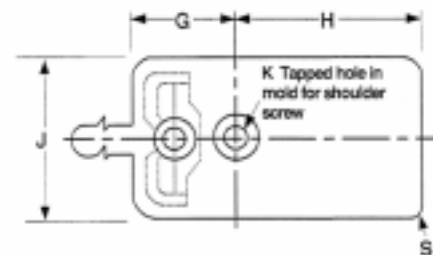


Slide Retainers

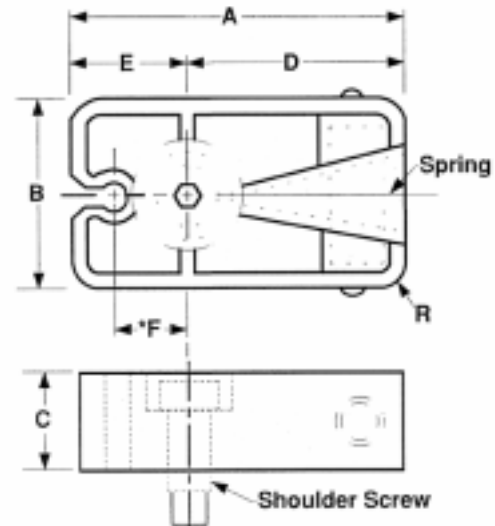
BMS Slide Retainers provide a compact method of slide retention that eliminates the use of springs or costly hydraulic systems. They are made of case hardened steel and available in 3 sizes for various weights of slides. They can also be used in multiples for larger or heavier slides. All Slide Retainers come supplied with dowel pin, spring, and shoulder screw.



Pocket in Mold



Slide Retainer



U.S. Pat. No. 3,811,645

***Important: The (F) dimension is the distance from the centerline of the dowel pin to the centerline of the shoulder screw.**

Part Number	BSL001	BSL002	BSL003
Price	38.75	42.25	49.75
(A)	1-1/2	2-1/8	3-3/8
(B)	.75	1.25	1.75
(C)	.63	.79	1.18
(D)	.89	1.31	2.08
(E)	.61	.81	1.30
(F)*	.360	.500	.800
(R)	.19	.25	.38
Dowel Pin Diameter	.250	.312	.375
Dowel Pin Length	1.25	1.50	2.25
Max Slide Weight	22LBS	44LBS	88LBS
(G)	.73	.93	1.42
(H)	1.01	1.43	2.20
(J)	1.00	1.50	2.00
(K) Depth	10-24x1/2	1/4-20x1/2	5/16-18x5/8
Shoulder Screw Diameter	.250	.312	.375
Shoulder Screw Length	.625	.750	1.000
(S)	.31	.37	.50