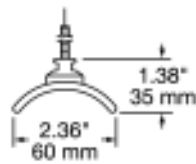
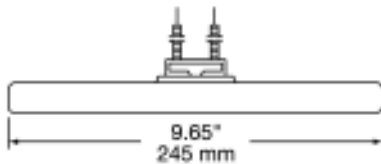
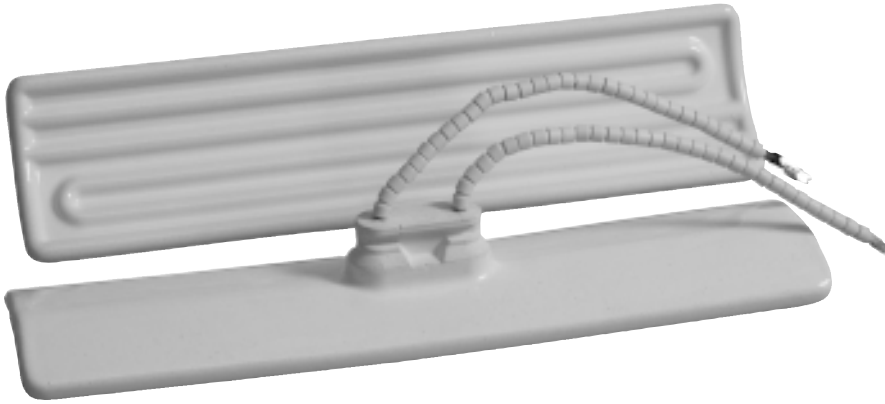


Radiant Process Heaters

Series CRB

60mm x 245mm (2.36" x 9.65")



Slot size for ceramic mounting head
.593" by 1.688" oval hole.

Design Features:

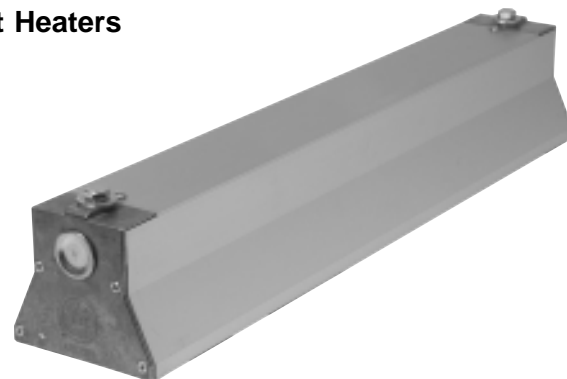
- Standard color is rose, which turns to gray when energized, and traditional white.
- Also available in yellow, which turns to orange when energized or black.
- Available with built-in type K thermocouple. (Type J optional)
- Long operating life, over 10,000 plus hours of continuous operation under normal conditions.
- Performance is unaffected by vibration or adverse atmospheric conditions.

Radiant heaters have 3-1/2" ceramic bead insulated leads, straight crimp terminals and a one-piece spring clip for mounting.

Watts	Volts	Color	Part # w/o T/C	Price	Part # w/ T/C 'K'	Price
150	220/240	Rose to Gray	CRB10216	30.15	CRB10217	49.85
250	220/240	Rose to Gray	CRB10006	30.15	CRB10008	49.85
400	220/240	Rose to Gray	CRB10014	30.15	CRB10016	49.85
650	120	Rose to Gray	CRB10020	30.15	CRB10022	49.85
650	220/240	Rose to Gray	CRB10023	30.15	CRB10025	49.85
650	480	Rose to Gray	CRB10088	30.15	CRB00165	49.85
1000	120	Rose to Gray	CRB10028	30.15	CRB10030	49.85
1000	220/240	Rose to Gray	CRB10031	30.15	CRB10033	49.85
1000	480	Rose to Gray	CRB10089	30.15	CRB10045	49.85
150	220/240	White	CRB00216	30.15	CRB00217	49.85
250	220/240	White	CRB00006	30.15	CRB00008	49.85
400	220/240	White	CRB00014	30.15	CRB00016	49.85
650	120	White	CRB00020	30.15	CRB00022	49.85
650	220/240	White	CRB00023	30.15	CRB00025	49.85
650	480	White	CRB00088	30.15	CRB00165	49.85
1000	120	White	CRB00028	30.15	CRB00030	49.85
1000	220/240	White	CRB00031	30.15	CRB00033	49.85
1000	480	White	CRB00089	30.15	CRB00045	49.85

Radiant Process Heaters

Linear Housings for Radiant Heaters



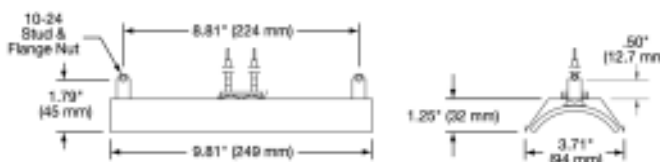
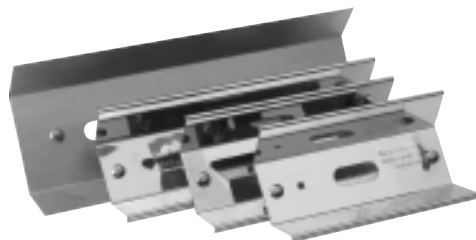
Part Number	Nominal Length	'A' Length	# CRB's Allowable	Price
CRK00001	10"	10.125	1	91.95
CRK00002	20"	20.000	2	99.80
CRK00003	30"	29.875	3	137.70
CRK00004	40"	39.750	4	145.55
CRK00021	50"	49.625	5	153.45
CRK00027	60"	59.500	6	162.85
CRK00029	70"	69.375	7	200.75

Linear housings include the following components:

- Housing Body
- End Plates
- 5/16-18 Mounting Bolts
- Cover and Ground Lug

Note: These housings do not include the reflectors needed for mounting the heaters or terminal blocks.

Reflectors for Radiant Heaters



Reflectors for radiant heaters:

- Designed to withstand bending and heat distortion.
- Made from highly polished chrome steel or optional aluminized steel for extreme temperatures and harsh environments.
- Will withstand high operating temperature.

One-Piece Mounting Clip (Standard)

Designed for heater mounting with 22 ga. (.028) to 20 ga. (.037) sheet metal.

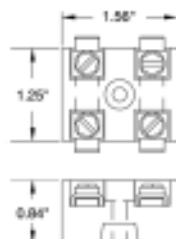


Two-Piece Mounting Clip (Optional)

The two-piece wave spring clip and holding clip assembly is used for mounting heaters in materials thicker than 20 ga. (.037) or thinner than 22 ga. (.028)



Terminal Block



Part Number	Description	Price
CRK00007	Reflector - Chrome Steel	25.50
CRK00049	Reflector - Aluminized Steel	23.65
SPR-103-102	One-Piece Mounting Clip	2.70
CRK00008	Two-Piece Mounting Clip	3.95
EHD-108-101	Terminal Block	6.85