

Premium Mica Heater Bands



**High Quality Inorganic Mica Construction.
12" High Temperature Leads, Post Terminals,
or Stainless Steel Braided Leads.
Low Profile Barrel Nut Straps.
Uniform Heat.
High Watt Density.**

I.D. x Width	Volts	Watts	12" Flexible Leads Unless Noted	Part Number	Price	
					1 - 11	12+
3/4 x 1	120	80		3000A	Call for Special Pricing!	
3/4 x 1	240	80		3001A		
7/8 x 1	120	80		3002A		
7/8 x 1	240	80		3003A		
7/8 x 1-1/4	120	90		3004A		
7/8 x 1-1/4	240	90		3005A		
7/8 x 1-1/2	120	100		3006A		
7/8 x 1-1/2	240	100		3007A		
1 x 1	120	100		1001A	9.85	9.36
1 x 1	240	100		1002A	9.85	9.36
1 x 1	120	100	12" SS Braid	3008A	12.15	11.54
1 x 1	240	100	12" SS Braid	3009A	12.15	11.54
1 x 1	120	125		1003A	9.85	9.36
1 x 1	240	125		1004A	9.85	9.36
1 x 1-1/2	120	200		3010A	9.70	9.22
1 x 1-1/2	240	200		1205A	9.70	9.22
1 x 2	120	200		1005A	10.00	9.50
1 x 2	240	200		1006A	10.00	9.50
1 x 2-1/2	120	250		3011A	11.09	10.54
1 x 2-1/2	240	250		3012A	11.09	10.54
1 x 2-1/2	240	250	36" SS Braid	3013A	21.81	20.72
1 x 3	120	300		3014A	10.99	10.44
1 x 3	240	300		3015A	10.99	10.44
1 x 4	120	400		3016A	17.04	16.19
1 x 4	240	400		3017A	17.04	16.19
1 x 5	120	500		3018A	13.98	13.28
1 x 5	240	500		3019A	13.98	13.28
1-1/4 x 1	120	125		3021A	9.80	9.31
1-1/4 x 1	240	125		3022A	9.80	9.31
1-1/4 x 1-1/2	120	200		3023A	9.80	9.31
1-1/4 x 1-1/2	240	200		3024A	9.80	9.31
1-1/4 x 2	120	250		3025A	10.83	10.29

Premium Mica Heater Bands

High Quality Inorganic Mica Construction.
12" High Temperature Leads, Post Terminals,
or Stainless Steel Braided Leads.
Low Profile Barrel Nut Straps.
Uniform Heat.
High Watt Density.



I.D. x Width	Volts	Watts	12" Flexible Leads Unless Noted	Part Number	Price	
					1 - 11	12+
1-1/4 x 2	240	250		3026A	10.83	10.29
1-1/4 x 3	120	400		3027A	11.52	10.94
1-1/4 x 3	240	400		3028A	11.52	10.94
1-3/8 x 1	120	200		3029A	9.80	9.31
1-3/8 x 1	240	200		3030A	9.80	9.31
1-3/8 x 1-1/4	240	200		1007A	9.75	9.26
1-3/8 x 1-1/2	120	200		3031A	9.80	9.31
1-3/8 x 1-1/2	240	200		3032A	9.80	9.31
1-3/8 x 2	120	300		3033A	10.83	10.29
1-3/8 x 2	240	300		3034A	10.83	10.29
1-1/2 x 5/8	120	100		3037A	Call for Special Pricing!	
1-1/2 x 5/8	240	100		3038A		
1-1/2 x 3/4	120	150		3039A		
1-1/2 x 3/4	240	150		3040A		
1-1/2 x 1	120	150		1008A	9.75	9.26
1-1/2 x 1	240	150		1009A	9.75	9.26
1-1/2 x 1	120/240	150		3041A	23.42	22.25
1-1/2 x 1-1/2	230	200		3042A	9.85	9.36
1-1/2 x 1-1/2	120	250		3043A	9.85	9.36
1-1/2 x 1-1/2	240	250		3044A	9.85	9.36
1-1/2 x 1-1/2	240	250	48" SS Braid	3045A	26.45	25.13
1-1/2 x 1-1/2	120	275		1010A	9.75	9.26
1-1/2 x 1-1/2	120	275	12" SS Braid	3048A	13.33	12.66
1-1/2 x 1-1/2	120	275	36" Leads	3047A	13.33	12.66
1-1/2 x 1-1/2	120	275	Post	3050A	9.75	9.26
1-1/2 x 1-1/2	120/240	275		3046A	16.29	15.48
1-1/2 x 1-1/2	240	275		1011A	9.75	9.26
1-1/2 x 1-1/2	240	275	36" Leads	1012A	13.27	12.61
1-1/2 x 1-1/2	240	275	Post	3051A	9.75	9.26
1-1/2 x 1-1/2	240	275	12" SS Braid	3049A	13.33	12.66

Premium Mica Heater Bands



**High Quality Inorganic Mica Construction.
12" High Temperature Leads, Post Terminals,
or Stainless Steel Braided Leads.
Low Profile Barrel Nut Straps.
Uniform Heat.
High Watt Density.**

I.D. x Width	Volts	Watts	12" Flexible Leads Unless Noted	Part Number	Price	
					1 - 11	12+
1-1/2 x 1-1/2	240	300		3052A	9.75	9.26
1-1/2 x 1-1/2	240	300	48" SS Braid	3054A	25.28	24.02
1-1/2 x 1-3/4	120	285		3055A	10.94	10.39
1-1/2 x 1-3/4	240	285		3056A	10.94	10.39
1-1/2 x 2	120	300		1013A	10.83	10.29
1-1/2 x 2	240	300		1014A	10.83	10.29
1-1/2 x 2	120	300	36" Leads	1209A	18.09	17.19
1-1/2 x 2	120/240	300	36" SS Braid	3058A	27.98	26.58
1-1/2 x 2-1/2	120	400		3059A	11.14	10.58
1-1/2 x 2-1/2	240	400		3060A	11.14	10.58
1-1/2 x 2-1/2	240	400	36" SS Braid	3061A	21.17	20.11
1-1/2 x 3	120	350	12" SS Braid	3062A	13.84	13.15
1-1/2 x 3	240	350	12" SS Braid	3063A	13.84	13.15
1-1/2 x 3	120	450		1015A	11.52	10.94
1-1/2 x 3	240	450		1016A	11.52	10.94
1-1/2 x 3	120	450	36" Leads	1210A	19.85	18.86
1-1/2 x 3	120/240	450		3064A	18.07	17.17
1-1/2 x 3-1/2	120	525		3065A	12.89	12.25
1-1/2 x 3-1/2	240	525		3066A	12.89	12.25
1-1/2 x 4	120	500		1017A	13.08	12.43
1-1/2 x 4	240	500		1018A	13.08	12.43
1-1/2 x 4	240	500	24" Leads	1204A	19.84	18.85
1-1/2 x 4	120	500	36" Leads	1211A	22.29	21.18
1-1/2 x 4	120/240	600		3067A	19.45	18.48
1-1/2 x 5	120	700		1202A	14.10	13.40
1-1/2 x 5	240	700		1019A	14.10	13.40
1-1/2 x 5	120	700	36" Leads	1212A	23.87	22.68
1-1/2 x 6	240	850		1021A	15.80	15.01
1-1/2 x 6	120	850		1020A	15.80	15.01
1-1/2 x 6	120	850	36" Leads	1213A	26.22	24.91
1-3/4 x 1	120	175		3068A	9.85	9.36
1-3/4 x 1	240	175		3069A	9.85	9.36

Premium Mica Heater Bands

**High Quality Inorganic Mica Construction.
12" High Temperature Leads, Post Terminals,
or Stainless Steel Braided Leads.
Low Profile Barrel Nut Straps.
Uniform Heat.
High Watt Density.**



I.D. x Width	Volts	Watts	12" Flexible Leads Unless Noted	Part Number	Price	
					1 - 11	12+
1-3/4 x 1	120	175	Post	3070A	9.85	9.36
1-3/4 x 1	240	175	Post	3071A	9.85	9.36
1-3/4 x 1-1/2	120	300		1022A	10.83	10.29
1-3/4 x 1-1/2	240	300		1023A	10.83	10.29
1-3/4 x 2	120	350		3072A	10.83	10.29
1-3/4 x 2	240	350		1024A	10.94	10.39
1-3/4 x 2-1/2	120	350		3073A	11.53	10.95
1-3/4 x 2-1/2	240	350		3074A	11.53	10.95
1-3/4 x 3	120	500		3075A	12.38	11.76
1-3/4 x 3	240	450		1025A	12.31	11.69
1-3/4 x 3-1/2	120	500		3076A	12.76	12.12
1-3/4 x 3-1/2	240	500		3077A	12.76	12.12
1-3/4 x 4	120	700		3078A	13.43	12.76
1-3/4 x 4	240	700		3079A	13.43	12.76
1-3/4 x 5	240	500	36" SS Braid	1026A	22.19	21.08
1-3/4 x 5	120	900		3080A	14.70	13.97
1-3/4 x 5	240	900		3081A	14.70	13.97
1-3/4 x 6	120	1000		3082A	16.04	15.24
1-3/4 x 6	240	1000		3083A	16.04	15.24
1-7/8 x 1	120	300	Post	3084A	9.85	9.36
1-7/8 x 1	240	300	Post	3085A	9.85	9.36
2 x 1	120	200		1027A	9.85	9.36
2 x 1	240	200		1028A	9.85	9.36
2 x 1-1/2	120	300		1029A	10.83	10.29
2 x 1-1/2	240	300		1030A	10.83	10.29
2 x 1-1/2	120/240	300		3086A	21.41	20.34
2 x 2	120	400		3087A	11.03	10.48
2 x 2	240	400		1031A	10.98	10.43
2 x 2-1/2	120	500		3089A	11.58	11.00
2 x 2-1/2	240	500		3090A	11.58	11.00
2 x 3	120	600		3091A	12.50	11.88
2 x 3	240	600		1032A	12.50	11.88
2 x 4	120	800		3092A	13.43	12.76

Premium Mica Heater Bands



High Quality Inorganic Mica Construction.
12" High Temperature Leads, Post Terminals,
or Stainless Steel Braided Leads.
Low Profile Barrel Nut Straps.
Uniform Heat.
High Watt Density.

I.D. x Width	Volts	Watts	12" Flexible Leads Unless Noted	Part Number	Price	
					1 - 11	12+
2 x 4	240	800		3093A	13.43	12.76
2 x 5	120	900		3094A	14.85	14.11
2 x 5	240	900		3095A	14.85	14.11
2 x 6	120	1200		3096A	16.12	15.31
2 x 6	240	1200		3097A	16.12	15.31
2-1/8 x 1	120	225		3098A	10.43	9.91
2-1/8 x 1	240	225		3099A	10.43	9.91
2-1/8 x 1-1/2	120	300		3100A	10.58	10.05
2-1/8 x 1-1/2	240	300		3101A	10.58	10.05
2-1/8 x 2	120	400		3102A	10.86	10.32
2-1/8 x 2	240	400		3103A	10.86	10.32
2-1/8 x 3	120	600		3104A	12.23	11.62
2-1/8 x 3	240	600		3105A	12.23	11.62
2-1/8 x 3	120	800	Post	3106A	12.23	11.62
2-1/4 x 1	120	225		3107A	10.58	10.05
2-1/4 x 1	240	225		3108A	10.58	10.05
2-1/4 x 1-1/2	120	350		3109A	10.58	10.05
2-1/4 x 1-1/2	240	350		3110A	10.58	10.05
2-1/4 x 2	120	450		3111A	10.86	10.32
2-1/4 x 2	240	450		3112A	10.86	10.32
2-1/4 x 2-1/2	120	525	Post	3113A	12.05	11.45
2-1/4 x 2-1/2	240	525	Post	3114A	12.05	11.45
2-1/4 x 2-1/2	120	600		3115A	11.98	11.38
2-1/4 x 2-1/2	240	600		3116A	11.98	11.38
2-1/4 x 3	120	700		3117A	12.23	11.62
2-1/4 x 3	240	700		3118A	12.23	11.62
2-3/8 x 1	240	250	Post	1033A	12.73	12.09
2-3/8 x 1	240	250		3119A	10.58	10.05
2-3/8 x 1-1/2	120	400		3120A	10.58	10.05
2-3/8 x 1-1/2	240	400		3121A	10.58	10.05
2-7/16 x 1	240	250	72" Leads	1034A	25.62	24.34
2-1/2 x 1	120	300		3122A	10.58	10.05
2-1/2 x 1	240	300		1035A	10.58	10.05

Premium Mica Heater Bands

High Quality Inorganic Mica Construction.
12" High Temperature Leads, Post Terminals,
or Stainless Steel Braided Leads.
Low Profile Barrel Nut Straps.
Uniform Heat.
High Watt Density.



I.D. x Width	Volts	Watts	12" Flexible Leads Unless Noted	Part Number	Price	
					1 - 11	12+
2-1/2 x 1	120	300	Post	3123A	10.43	9.91
2-1/2 x 1	240	300	Post	3124A	10.43	9.91
2-1/2 x 1-1/2	120	350		3125A	10.58	10.05
2-1/2 x 1-1/2	240	350		3126A	10.58	10.05
2-1/2 x 2	120	500		3127A	10.86	10.321
2-1/2 x 2	240	500		3128A	10.86	10.32
2-1/2 x 2-3/8	120	550	Post	3129A	12.10	11.50
2-1/2 x 2-3/8	240	550	Post	3130A	12.10	11.50
2-1/2 x 2-3/8	120	650	Post	3131A	12.10	11.50
2-1/2 x 2-3/8	240	650	Post	3132A	12.10	11.50
2-1/2 x 3	120	700		3133A	12.23	11.62
2-1/2 x 3	240	700		3134A	12.23	11.62
2-1/2 x 4	240	850	Post	3135A	13.22	12.56
2-1/2 x 5	240	1150	Post	3136A	14.65	13.92
2-3/4 x 1-1/2	120	400		3137A	10.83	10.29
2-3/4 x 1-1/2	240	400		3138A	10.83	10.29
3 x 1	120	300		3139A	10.67	10.14
3 x 1	240	300		3140A	10.67	10.14
3 x 1	230	400		3141A	10.67	10.14
3 x 1	230	400	Post	1037A	12.94	12.29
3 x 1	230/Half	200/Half	2 Piece, Post	1038A	22.05	20.95
3 x 1	460	400		1039A	12.94	12.29
3 x 1-1/2	230	450	Post	1040A	13.10	12.45
3 x 1-1/2	120	500		3142A	11.09	10.54
3 x 1-1/2	240	500		3143A	11.09	10.54
3 x 1-1/2	240	500	Post	3144A	11.09	10.54
3 x 2	120	600		3145A	11.74	11.15
3 x 2	240	600		3146A	11.74	11.15
3 x 3	120	900		3147A	13.38	12.71
3 x 3	240	900		3148A	13.38	12.71
3-1/8 x 1	240	400		3149A	10.89	10.35
3-1/8 x 1-1/2	240	500		3150A	10.98	10.43
3-1/2 x 1-1/2	240	500	Post	3151A	16.59	15.76

Premium Mica Heater Bands



**High Quality Inorganic Mica Construction.
12" High Temperature Leads, Post Terminals,
or Stainless Steel Braided Leads.
Low Profile Barrel Nut Straps.
Uniform Heat.
High Watt Density.**

I.D. x Width	Volts	Watts	12" Flexible Leads Unless Noted	Part Number	Price	
					1 - 11	12+
3-1/2 x 2	240	650	Post	3152A	17.29	16.43
3-5/8 x 1-1/2	230	625	Post	1041A	13.77	13.08
3-3/4 x 1-1/2	240	700	Post	3153A	16.93	16.08
4 x 1	230	625	Post	1042A	13.59	12.91
4 x 1-1/2	230	400	Post	1044A	22.15	21.04
4 x 1-1/2	230	625	Post	1043A	22.15	21.04
4 x 1-1/2	460	625	18" Leads	1091A	16.34	15.52
4 x 1-1/2	230	625	120" Leads	3155A	36.94	35.09
4 x 2	240	800	Post	3156A	22.47	21.35
4 x 2	460	1100	Post	1046A	23.42	22.25
4 x 2-1/4	230	1000	Post	1095A	23.70	22.52
4 x 2-1/4	460	1000	Post	1096A	23.70	22.52
4-1/2 x 1-1/2	240	750	Post	3158A	21.89	20.80
5-1/4 x 1-1/2	230	600	Post	1049A	23.57	22.39
5-1/4 x 1-1/2	230/Half	300/Half	2 Piece, Post	1050A	24.95	23.70
5-1/4 x 1-1/2	230	1000	Post	1051A	23.93	22.73
5-1/4 x 2	230/Half	330/Half	2 Piece, Post	1082A	25.80	24.51
5-1/4 x 3	230	1700	Post	3223A	25.99	24.69
5-1/4 x 4-1/2	230	2400	Post	1207A	31.94	30.34
5-1/4 x 4-1/2	230	2700	Post	3238A	31.94	30.34
5-1/4 x 4-1/2	230	3300	Post	1208A	31.94	30.34
5-1/4 x 5	230	2400	Post	3226A	33.52	31.84
5-3/4 x 1	460	600	Post	3251A	15.92	15.12
5-3/4 x 1-1/2	230	600	Post	1054A	25.43	24.16
5-3/4 x 1-1/2	230	1000	Post	1084A	25.43	24.16
5-3/4 x 1-1/2	460	1000	Post	3228A	24.39	23.17
6 x 1-1/2	230/Half	500/Half	2 Piece, Post	1055A	25.60	24.32
6 x 1-1/2	460	1000	Post	3160A	16.49	15.67
6-3/4 x 1-1/2	230	600	Post	1058A	17.60	16.72
6-3/4 x 1-1/2	220	815	Post	1059A	17.60	16.72
6-3/4 x 1-1/2	230	1000	Post	1060A	17.60	16.72
6-3/4 x 1-1/2	460	1000	Post	3163A	17.60	16.72

Premium Mica Heater Bands

High Quality Inorganic Mica Construction.
12" High Temperature Leads, Post Terminals,
or Stainless Steel Braided Leads.
Low Profile Barrel Nut Straps.
Uniform Heat.
High Watt Density.



I.D. x Width	Volts	Watts	12" Flexible Leads Unless Noted	Part Number	Price	
					1 - 11	12+
6-3/4 x 2-1/2	230/Half	575/Half	2 Piece, Post	1085A	37.79	35.90
6-3/4 x 4	230	2600	Post	3165A	34.64	32.91
6-3/4 x 6	230	3750	Post	3166A	44.57	42.34
6-3/4 x 6	460	3750	Post	3167A	44.57	42.34
7 x 1-1/2	230	1000	Post	3252A	25.22	23.96
7 x 1-1/2	460	1000	Post	3253A	25.22	23.96
7 x 3	230	2000	Post	3254A	29.81	28.32
7 x 3	460	2000	Post	3255A	29.81	28.32
7-1/4 x 1-1/2	230	1025	Post	3256A	18.09	17.19
7-1/4 x 1-1/2	460	1025	Post	3257A	18.09	17.19
7-1/4 x 3	230	2050	Post	3258A	30.54	29.01
7-1/4 x 3	460	2050	Post	3259A	30.54	29.01
7-1/2 x 1-1/2	230	815	Post	1063A	26.61	25.28
7-1/2 x 1-1/2	230	1100	Post	3260A	25.52	24.24
7-1/2 x 1-1/2	460	1100	Post	3261A	18.09	17.19
7-1/2 x 3	230	2100	Post	3262A	30.86	29.32
7-1/2 x 3	460	2100	Post	3263A	30.86	29.32
7-5/8 x 3	230	1800	Post	3169A	33.15	31.49
7-5/8 x 3	230	2000	Post	1065A	33.15	31.49
7-3/4 x 1-1/2	230	1150	Post	3264A	29.35	27.88
7-3/4 x 1-1/2	460	1150	Post	3265A	26.41	25.09
7-3/4 x 3	230	2200	Post	3266A	26.41	25.09
7-3/4 x 3	460	2200	Post	3267A	31.59	30.01
8 x 1-1/2	230	1200	Post	3268A	31.59	30.01
8 x 1-1/2	460	1200	Post	3269A	26.41	25.09
8 x 3	230	2300	Post	3270A	26.41	25.09
8 x 3	460	2300	Post	3271A	31.59	30.01
8-1/4 x 1-1/2	230	1250	Post	3272A	31.59	30.01
8-1/4 x 1-1/2	460	1250	Post	3273A	27.17	25.81
8-1/4 x 2	230/Half	900/Half	2 Piece, Post	1067A	27.17	25.81
8-1/4 x 3	230	2400	Post	3274A	32.74	31.10
8-1/4 x 3	460	2400	Post	3275A	32.74	31.10

Premium Mica Heater Bands



High Quality Inorganic Mica Construction.
12" High Temperature Leads, Post Terminals,
or Stainless Steel Braided Leads.
Low Profile Barrel Nut Straps.
Uniform Heat.
High Watt Density.

I.D. x Width	Volts	Watts	12" Flexible Leads Unless Noted	Part Number	Price	
					1 - 11	12+
8-1/2 x 1-1/2	230	1300	Post	3276A	27.17	25.81
8-1/2 x 1-1/2	460	1300	Post	3277A	27.17	25.81
8-1/2 x 3	230	2550	Post	3278A	32.40	30.78
8-1/2 x 3	460	2550	Post	3279A	32.43	30.81
8-3/4 x 1-1/2	230	1350	Post	3280A	28.20	26.79
8-3/4 x 1-1/2	460	1350	Post	3281A	28.20	26.79
8-3/4 x 3	230	2600	Post	3282A	34.18	32.47
8-3/4 x 3	460	2600	Post	3283A	34.18	32.47
9 x 1-1/2	230	1400	Post	3284A	28.20	26.79
9 x 1-1/2	460	1400	Post	3285A	28.20	26.79
9 x 3	230	2650	Post	3286A	34.18	32.47
9 x 3	460	2650	Post	3287A	34.18	32.47
9-1/4 x 1-1/2	230	1450	Post	3288A	20.97	19.92
9-1/4 x 1-1/2	460	1450	Post	3289A	20.97	19.92
9-1/4 x 3	230	2700	Post	3290A	37.35	35.48
9-1/4 x 3	460	2700	Post	3291A	37.35	35.48
9-1/2 x 1-1/2	230	1475	Post	3292A	20.97	19.92
9-1/2 x 1-1/2	460	1475	Post	3293A	20.97	19.92
9-1/2 x 3	230	2000	Post	1072A	36.53	34.70
9-1/2 x 3	230/Half	965/Half	2 Piece, Post	1087A	46.49	44.17
9-1/2 x 6	230/Half	2000/Half	2 Piece, Post	1073A	71.65	68.07
9-3/4 x 1-1/2	230	1500	Post	3294A	21.64	20.56
9-3/4 x 1-1/2	460	1500	Post	3295A	21.64	20.56
9-3/4 x 3	230	2800	Post	3296A	38.57	36.64
9-3/4 x 3	460	2800	Post	3297A	38.57	36.64
10 x 1-1/2	230	1600	Post	3298A	29.89	28.40
10-1/4 x 1-1/2	230	1700	Post	3299A	22.77	21.63
10-1/4 x 1-1/2	460	1700	Post	3300A	22.77	21.63
10-1/2 x 1-1/2	230	1800	Post	3301A	22.77	21.63
10-3/4 x 1-1/2	230	1950	Post	3302A	22.76	21.62
10-3/4 x 1-1/2	460	1950	Post	3303A	22.76	21.62
11-1/4 x 1-1/2	230	2100	Post	3304A	25.00	23.75
11-1/4 x 3	230/Half	1200/Half	2 Piece, Post	1077A	52.37	49.75

Metric Mica Heater Bands

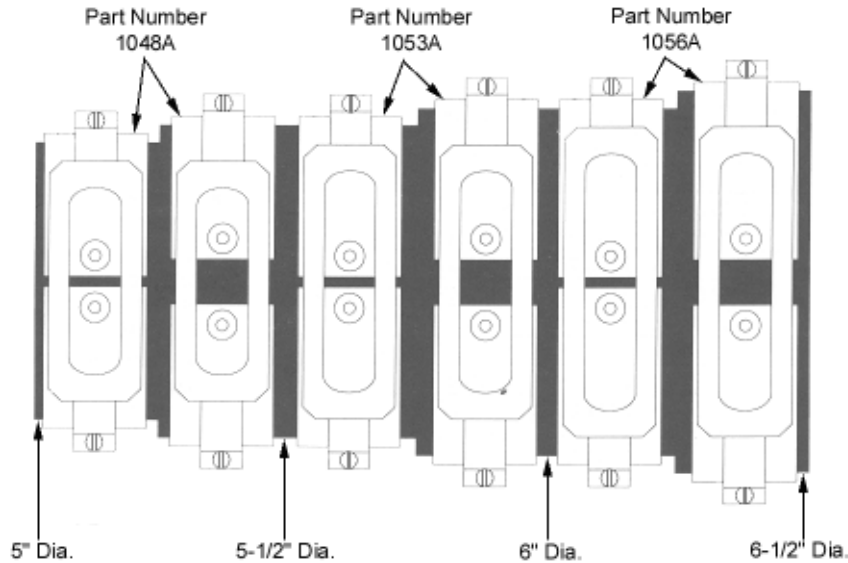
High Quality Inorganic Mica Construction.
12" High Temperature Leads.
Low Profile Barrel Nut Straps.
Uniform Heat.
High Watt Density.



I.D. x Width (Millimeters)	I.D. x Width (Inches)	Volts	Watts	Part Number	Price	
					1 - 11	12+
30 x 30	1.181 x 1.181	120	100	3188A	11.38	10.81
30 x 30	1.181 x 1.181	240	100	3189A	11.38	10.81
30 x 38	1.181 x 1.496	120	130	3190A	11.38	10.81
30 x 38	1.181 x 1.496	240	130	3191A	11.38	10.81
35 x 16	1.378 x 0.630	120	60	3192A	Call for Special Pricing!	
35 x 16	1.378 x 0.630	240	60	3193A		
35 x 22	1.378 x 0.866	120	85	3194A	Call for Special Pricing!	
35 x 22	1.378 x 0.866	240	85	3195A		
35 x 25	1.378 x 0.984	120	100	3196A	11.38	10.81
35 x 25	1.378 x 0.984	240	100	3197A	11.38	10.81
45 x 25	1.772 x 0.984	120	140	3198A	11.26	10.70
45 x 25	1.772 x 0.984	240	140	3199A	11.26	10.70
45 x 30	1.772 x 1.181	120	250	3200A	11.14	10.58
45 x 30	1.772 x 1.181	240	250	3201A	11.14	10.58
48 x 22	1.889 x 0.866	120	220	3202A	Call for Special Pricing!	
48 x 22	1.889 x 0.866	240	220	3203A		
50 x 18	1.969 x 0.709	120	120	3204A	Call for Special Pricing!	
50 x 18	1.969 x 0.709	240	120	3205A		
50 x 34	1.969 x 1.339	120	275	3206A	12.83	12.19
50 x 34	1.969 x 1.339	240	275	3207A	13.06	12.41
52 x 34	2.047 x 1.339	120	200	3208A	13.06	12.41
52 x 34	2.047 x 1.339	240	200	3209A	13.06	12.41
56 x 22	2.205 x 0.866	120	250	3210A	Call for Special Pricing!	
56 x 22	2.205 x 0.866	240	250	3211A		
60 x 22	2.362 x 0.866	120	275	3212A	Call for Special Pricing!	
60 x 22	2.362 x 0.866	240	275	3213A		
65 x 20	2.559 x 0.787	120	150	3214A	Call for Special Pricing!	
65 x 20	2.559 x 0.787	240	150	3215A		
65 x 22	2.559 x 0.866	120	275	3216A	Call for Special Pricing!	
65 x 22	2.559 x 0.866	240	275	3217A		

Adjustable I.D. Mica Heater Bands **BMS**

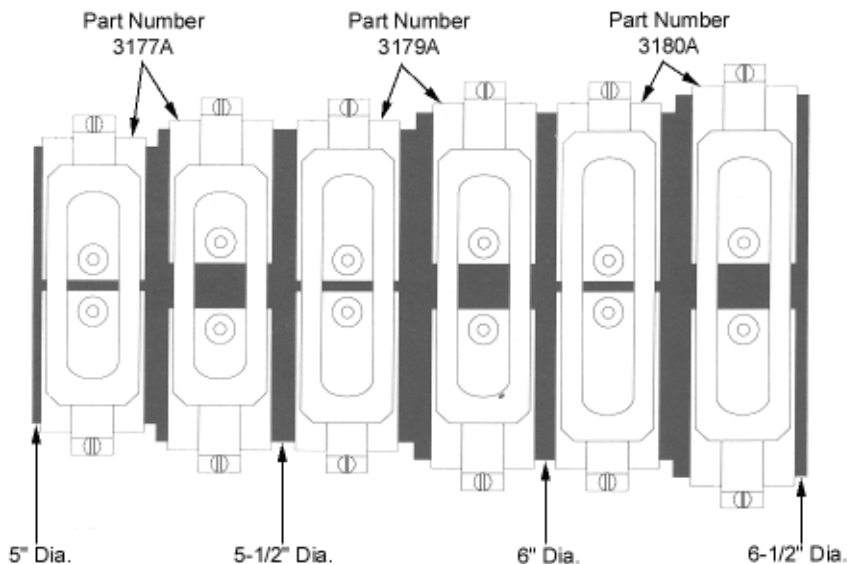
The BMS Adjustable I.D. Heater Band is a two piece mica heater with a special clamping strap which provides additional clearance for the post terminals when used on various diameters. The two piece design allows easy installation or removal. Each half is constructed for 240 volt operation. Wire in parallel for 240 volt, in series for 480 volt operation.



Part Number	Fits Diameters	Width	Volts Per Half	Total Watts	Price
1045A	4" to 4-1/2"	1-1/2"	240	550	27.48
1047A	4-1/2" to 5"	1-1/2"	240	650	28.02
1048A	5" to 5-1/2"	1-1/2"	240	700	28.86
3173A	5" to 5-1/2"	3"	240	1400	33.11
1053A	5-1/2" to 6"	1-1/2"	240	800	29.25
1056A	6" to 6-1/2"	1-1/2"	240	850	30.69
3174A	6" to 6-1/2"	3"	240	1700	36.24
1057A	6-1/2" to 7"	1-1/2"	240	900	31.51
1062A	7" to 7-1/2"	1-1/2"	240	1100	32.26
1064A	7-1/2" to 8"	1-1/2"	240	1200	33.38
1066A	8" to 8-1/2"	1-1/2"	240	1300	34.15
1069A	8-1/2" to 9"	1-1/2"	240	1400	35.31
1070A	9" to 9-1/2"	1-1/2"	240	1500	36.33
1071A	9-1/2" to 10"	1-1/2"	240	1600	36.94
1074A	10" to 10-1/2"	1-1/2"	240	1700	39.10
1075A	10-1/2" to 11"	1-1/2"	240	1800	40.65
1076A	11" to 11-1/2"	1-1/2"	240	1800	45.90
1078A	11-1/2" to 12"	1-1/2"	240	1850	48.06

Adjustable I.D. Mica Heater Bands **BMS** **BURNS**

The BMS Adjustable I.D. Heater Band is a two piece mica heater with a special clamping strap which provides additional clearance for the post terminals when used on various diameters. The two piece design allows easy installation or removal. Each half is constructed for 120 volt operation. Wire in parallel for 120 volt, in series for 240 volt operation.



Part Number	Fits Diameters	Width	Volts Per Half	Total Watts	Price
3175A	4" to 4-1/2"	1-1/2"	120	550	26.65
3176A	4-1/2" to 5"	1-1/2"	120	650	27.45
3177A	5" to 5-1/2"	1-1/2"	120	700	28.41
3178A	5" to 5-1/2"	3"	120	1400	33.46
3179A	5-1/2" to 6"	1-1/2"	120	800	29.00
3180A	6" to 6-1/2"	1-1/2"	120	850	29.61
3181A	6" to 6-1/2"	3"	120	1700	36.24
3182A	6-1/2" to 7"	1-1/2"	120	900	31.07
3183A	7" to 7-1/2"	1-1/2"	120	1100	31.26
3184A	7-1/2" to 8"	1-1/2"	120	1200	32.40
3185A	8" to 8-1/2"	1-1/2"	120	1200	33.32
3186A	8-1/2" to 9"	1-1/2"	120	1200	34.06
3187A	9" to 9-1/2"	1-1/2"	120	1500	34.87

Thinband® Heater Bands

The Thinband is back! U.S. Patent #5359179

The Thinband® heater band is the patented redesign of the mica heater band. Thinband heaters are delivered fast and install easily, keeping costs down and machines running. Watt densities as high as 55 W/in² and sheath temperatures to 900° F make these heaters the easy choice when replacing heaters. The new flexible, one-piece design makes installation faster on plastic processing equipment because it can be opened to the full diameter of the barrel without internal damage to the heater. The Thinband heater can be installed on a barrel without removing other heater bands already in place. The most innovative feature of the Thinband is the “Quick Clamp” option. The Quick Clamp opens to fit over the barrel and snaps in place with one easy flip of its latching lever!



- Quick clamp makes installation easy
- Flexible one piece design
- Sheath temperatures to 900° F
- Watt densities to 55 w/in²
- Contamination resistant

Quick Clamp with Type T Terminals



Quick Clamp with Type F
Fiberglass Leads



Quick Clamp with Type F Right
Angle Fiberglass Leads



Quick Clamp with Type C
SS Braided Leads



Quick Clamp with European Type
Quick Disconnect Plug



Quick Clamp with Type BR Right
Angle SS Braided Leads



Quick Clamp with Type H
SS Metal Conduit Leads

Thinband® Heater Bands

I.D.	Width	Volts	Watts	Watt Density	1 or 2 Pc Band	Lead Style	Part Number with Quick Clamp	Price	Part Number with Clamp Bar	Price
1	1	240	125	55	1	A	---	---	1101T	52.14
	1	240	125	55	1	L	---	---	1102T	50.97
	1-1/2	240	200	59	1	A	---	---	1103T	52.14
	1-1/2	240	200	59	1	L	---	---	1104T	50.97
1-1/2	1	240	200	52	1	A	---	---	1105T	52.14
	1	240	200	52	1	L	---	---	1106T	50.97
	1-1/2	240	275	48	1	A	---	---	1107T	52.14
	1-1/2	240	275	48	1	L	---	---	1108T	50.97
	3	240	500	43	1	A	---	---	1109T	58.74
	3	240	500	43	1	L	---	---	1110T	57.57
1-3/4	1-1/2	240	300	43	1	A	---	---	1111T	52.14
	1-1/2	240	300	43	1	L	---	---	1112T	50.97
2-1/2	1-1/2	240	350	37	1	C	---	---	1113T	57.91
	1-1/2	240	350	37	1	T	---	---	1114T	41.16
3	1-1/2	240	500	40	1	C	---	---	1115T	57.91
	1-1/2	240	500	40	1	T	---	---	1116T	41.16
3-1/4	1-1/2	240	400	29	1	C	---	---	1117T	60.01
	1-1/2	240	400	29	1	T	---	---	1118T	43.26
3-1/2	1-1/2	240	500	33	1	C	---	---	1119T	60.01
	1-1/2	240	500	33	1	T	---	---	1120T	43.26
3-3/4	1-1/2	240	700	43	1	C	---	---	1121T	62.12
	1-1/2	240	700	43	1	T	---	---	1122T	45.37
4	1-1/2	240	650	37	1	C	1001T	86.25	1123T	62.12
	1-1/2	240	650	37	1	T	1002T	69.50	1124T	45.37
	2	240	800	35	1	C	1003T	90.02	1125T	65.89
	2	240	800	35	1	T	1004T	73.27	1126T	49.14
	3	240	1000	29	1	C	1005T	119.70	1127T	71.72
	3	240	1000	29	1	T	1006T	102.95	1128T	54.97
4-1/4	1-1/2	240	550	30	1	C	1007T	88.30	1129T	64.17
	1-1/2	240	550	30	1	T	1008T	71.55	1130T	47.42
4-1/2	1-1/2	240	400	20	1	C	1009T	88.30	1131T	64.17
	1-1/2	240	400	20	1	T	1010T	71.55	1132T	47.42
	2	240	500	19	1	C	1011T	92.68	1133T	68.56
	2	240	500	19	1	T	1012T	75.93	1134T	51.81
	3	240	1200	30	1	C	1013T	123.30	1135T	75.32
	3	240	1200	30	1	T	1014T	106.55	1136T	58.57
4-3/4	1-1/2	240	650	31	1	C	1015T	90.47	1137T	66.34
	1-1/2	240	650	31	1	T	1016T	73.72	1138T	49.59
5	1-1/2	240	700	32	1	C	1017T	90.47	1139T	66.34
	1-1/2	240	700	32	1	T	1018T	73.72	1140T	49.59
	2	240	900	30	1	C	1019T	95.35	1141T	71.22
	2	240	900	30	1	T	1020T	78.60	1142T	54.47
	3	240	850	20	1	C	1021T	126.91	1143T	78.93
	3	240	850	20	1	T	1022T	110.16	1144T	62.18
5-1/4	1-1/2	240	600	26	1	T	1023T	75.77	1145T	51.64
	2	240	1000	33	1	T	1024T	81.31	1146T	57.19

I.D.	Width	Volts	Watts	Watt Density	1 or 2 Pc Band	Lead Style	Part Number with Quick Clamp	Price	Part Number with Clamp Bar	Price
5-1/4	3	240	1200	26	1	T	1025T	113.65	1147T	65.67
5-1/2	1-1/2	240	800	33	1	T	1026T	75.77	1148T	51.64
	2	240	1000	30	1	T	1027T	81.31	1149T	57.19
	3	240	1500	30	1	T	1028T	113.65	1150T	65.67
5-3/4	1-1/2	240	750	29	1	T	1029T	77.88	1151T	53.75
	2	240	1000	30	1	T	1030T	83.98	1152T	59.85
	3	240	1500	30	1	T	1031T	117.31	1153T	69.33
6	1-1/2	240	850	32	1	T	1032T	77.88	1154T	53.75
	2	240	1000	28	1	T	1033T	83.98	1155T	59.85
	3	240	1400	26	1	T	1034T	117.31	1156T	69.33
6-1/4	1-1/2	240	850	30	1	T	1035T	79.93	1157T	55.80
	2	240	1000	27	1	T	1036T	86.69	1158T	62.57
	3	240	1500	27	1	T	1037T	120.86	1159T	72.88
6-1/2	1-1/2	240	950	33	1	T	1038T	79.93	1160T	55.80
	2	240	1000	26	1	T	1039T	86.69	1161T	62.57
	3	240	1400	24	1	T	1040T	120.86	1162T	72.88
6-3/4	1-1/2	240	1000	33	1	T	1041T	82.04	1163T	57.91
	2	240	1300	32	1	T	1042T	89.36	1164T	65.23
	3	240	2000	33	1	T	1043T	124.52	1165T	76.54
7	1-1/2	240	950	30	1	T	1044T	82.04	1166T	57.91
	2	240	1100	26	1	T	1045T	89.36	1167T	65.23
	3	240	1650	26	1	T	1046T	124.52	1168T	76.54
7-1/4	1-1/2	240	1000	30	1	T	1047T	84.14	1169T	60.01
	3	240	1800	27	1	T	1048T	128.07	1170T	80.09
7-1/2	1-1/2	240	1000	30	1	T	1049T	84.14	1171T	60.01
	2	240	1200	27	1	T	1050T	92.02	1172T	67.89
	3	240	1800	27	1	T	1051T	128.07	1173T	80.09
7-3/4	1-1/2	240	1000	29	1	T	1052T	86.31	1174T	62.18
	3	240	2000	29	1	T	1053T	131.68	1175T	83.70
8	1-1/2	240	1200	33	1	T	1054T	86.31	1176T	62.18
	2	240	1500	30	1	T	1055T	94.74	1177T	70.61
	3	240	2250	31	1	T	1056T	131.68	1178T	83.70
8-1/4	1-1/2	240	1100	30	1	T	1057T	88.30	1179T	64.17
	3	240	2000	27	1	T	1058T	135.23	1180T	87.25
8-1/2	1-1/2	240	1200	31	1	T	1059T	88.30	1181T	64.17
	2	240	1600	31	1	T	1060T	97.45	1182T	73.33
	3	240	2500	32	1	T	1061T	135.23	1183T	87.25
9	1-1/2	240	1300	32	1	T	1062T	90.47	1184T	66.34
	2	240	1800	33	1	T	1063T	100.28	1185T	76.16
	3	240	2500	30	1	T	1064T	138.89	1186T	90.91
9-1/2	2	240	1800	32	1	T	1065T	103.00	1187T	78.87
	3	240	2000	23	1	T	1066T	142.44	1188T	94.46
10	1-1/2	240	1400	31	1	T	1067T	94.63	1189T	70.50
11	1-1/2	240	1600	32	1	T	1068T	98.79	1190T	74.66
	2	240	2000	30	1	T	1069T	110.93	1191T	86.81
12	2	240	2300	33	1	T	1070T	116.31	1192T	92.19

Highest Quality, Longest Lasting Mica Heater Bands

Tempco's Duraband heater design is the result of many years of research, development and testing for a reliable mica insulated heater band that can perform at higher operating temperatures (up to 900°F) essential to process high temperature resins, provide long, efficient service necessary for today's high productivity of plastic extruders, injection and blow molding machines. Duraband is a proven heater design for good life efficiency and dependability. It assures maintaining the lowest winding temperatures possible, keeping a low-mass heating element assembly for fast heat-up and quick thermal response to controls. It incorporates the Low Thermal Expansion Built-In Strap, a unique design feature originally developed and patented by Tempco.

Construction Types & Lead Configurations



Type NB (1 Piece) Built-in Strap and T1 Screw Terminals



Type NB (1 Piece) Built-in Strap and T2 Screw Terminals



Type NB (1 Piece) Built-in Strap and T3 Screw Terminals



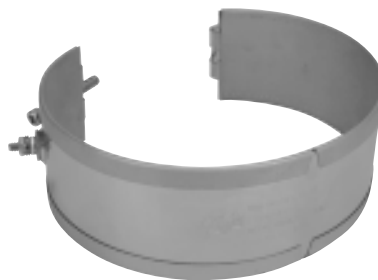
Type NS (2 Piece) Built-in Strap and T1 Screw Terminals



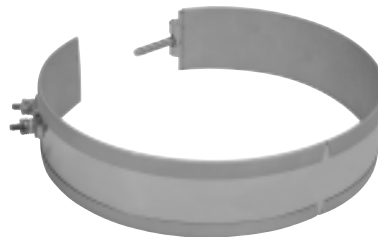
Type NS (2 Piece) Built-in Strap and T2 Screw Terminals



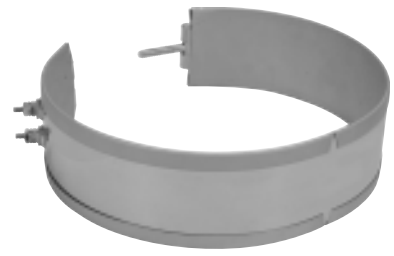
Type NS (2 Piece) Built-in Strap and T3 Screw Terminals



Type NE (Expandable) Built-in Strap and T1 Screw Terminals



Type NE (Expandable) Built-in Strap and T2 Screw Terminals



Type NE (Expandable) Built-in Strap and T3 Screw Terminals

Tempco Duraband[®] Heater Bands



Features:

- Economically priced.
- Type NHL with 12" leads and 2" of protective sleeving.
- Supplied with low profile clamping strap.

I.D.	Width	Wattage	Part Number Voltage 120	Part Number Voltage 240	Price
7/8	1	85	NHL00130	NHL00131	22.00
1	1	100	NHL00100	NHL00101	22.00
	1	125	NHL00132	NHL00133	22.00
	1-1/2	150	NHL00102	NHL00103	22.00
	1-1/2	200	NHL00104	NHL00105	22.00
	2	250	NHL00106	NHL00107	22.00
1-1/4	5/8	100	NHL00154	NHL00155	22.00
	1	175	NHL00108	NHL00109	22.00
	1-1/4	125	NHL00156	NHL00157	22.00
	1-1/4	250	NHL00158	NHL00159	22.00
	1-1/2	250	NHL00110	NHL00111	22.00
1-1/2	7/8	100	NHL00160	NHL00161	22.00
	1	100	NHL00162	NHL00163	22.00
	1	150	NHL00112	NHL00113	22.00
	1	200	NHL00114	NHL00115	22.00
	1-1/4	250	NHL00164	NHL00165	22.00
	1-1/2	150	NHL00134	NHL00135	22.00
	1-1/2	200	NHL00116	NHL00117	22.00
	1-1/2	250	NHL00136	NHL00137	22.00
	1-1/2	275	NHL00118	NHL00119	22.00
	1-1/2	300	NHL00138	NHL00139	22.00
	2	300	NHL00120	NHL00121	22.80
	2-1/2	350	NHL00122	NHL00123	23.10
	2-1/2	400	NHL00166	NHL00167	23.10
	3	350	NHL00168	NHL00169	24.35
	3	400	NHL00124	NHL00125	24.35
3	500	NHL00170	NHL00171	24.35	
1-3/4	1	175	NHL00172	NHL00173	22.15
	1-1/2	200	NHL00174	NHL00175	22.15
	1-1/2	225	NHL00140	NHL00141	22.15
	1-1/2	250	NHL00176	NHL00177	22.15
	1-1/2	300	NHL00178	NHL00179	22.15
	3	500	NHL00180	NHL00181	24.35
2	1	200	NHL00182	NHL00183	22.00
	1-1/2	300	NHL00142	NHL00143	22.55
	2	400	NHL00144	NHL00145	23.20
2-1/8	1	100	NHL00126	NHL00127	22.00
	2	200	NHL00128	NHL00129	23.50
2-1/4	1	225	NHL00146	NHL00147	22.55
2-7/8	1	250	NHL00148	NHL00149	22.55
2-1/2	1	300	NHL00150	NHL00151	22.55
	1-1/2	200	NHL00152	NHL00153	22.95
	1-1/2	350	NHL00186	NHL00187	22.95

Tempco Duraband® Heater Bands



Features:

- Economically priced.
- Type NHW with 12" leads and 10" stainless steel wire braid.
- Supplied with low profile clamping strap.

I.D.	Width	Wattage	Part Number Voltage 120	Part Number Voltage 240	Price
7/8	1	85	NHW00130	NHW00131	24.65
1	1	100	NHW00100	NHW00101	24.65
	1	125	NHW00132	NHW00133	24.65
	1-1/2	150	NHW00102	NHW00103	24.65
	1-1/2	200	NHW00104	NHW00105	24.65
	2	250	NHW00106	NHW00107	24.65
1-1/4	1	175	NHW00108	NHW00109	24.65
	1-1/4	125	NHW00156	NHW00157	24.65
	1-1/4	250	NHW00158	NHW00159	24.65
	1-1/2	250	NHW00110	NHW00111	24.65
1-1/2	7/8	100	NHW00160	NHW00161	24.65
	1	100	NHW00162	NHW00163	24.65
	1	150	NHW00112	NHW00113	24.65
	1	200	NHW00114	NHW00115	24.65
	1-1/4	250	NHW00164	NHW00165	24.65
	1-1/2	150	NHW00134	NHW00135	24.65
	1-1/2	200	NHW00116	NHW00117	24.65
	1-1/2	250	NHW00136	NHW00137	24.65
	1-1/2	275	NHW00118	NHW00119	24.65
	1-1/2	300	NHW00138	NHW00139	24.65
	2	300	NHW00120	NHW00121	25.40
	2-1/2	350	NHW00122	NHW00123	25.75
	2-1/2	400	NHW00166	NHW00167	25.75
	3	400	NHW00124	NHW00125	27.00
	3	500	NHW00170	NHW00171	27.00
1-3/4	1-1/2	200	NHW00174	NHW00175	24.75
	1-1/2	225	NHW00140	NHW00141	24.75
	1-1/2	250	NHW00176	NHW00177	24.75
	1-1/2	300	NHW00178	NHW00179	24.75
2	1-1/2	300	NHW00142	NHW00143	25.35
	2	400	NHW00144	NHW00145	25.80
2-1/8	1	100	NHW00126	NHW00127	24.65
	1	200	NHW00184	NHW00185	24.65
	2	200	NHW00128	NHW00129	26.40
2-1/4	1	225	NHW00146	NHW00147	25.35
2-3/8	1	250	NHW00148	NHW00149	25.35
2-1/2	1	300	NHW00150	NHW00151	25.35
	1-1/2	200	NHW00152	NHW00153	25.60
	1-1/2	350	NHW00186	NHW00187	25.60
2-3/4	1-1/2	400	NHW00188	NHW00189	25.60

Tempco Duraband® Heater Bands

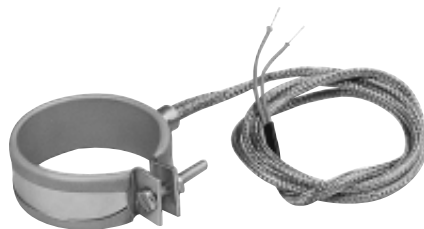
Stock and Standard (non-stock) replacement heater bands for plastic injection molding machines.



I.D.	Width	Wattage	Figure	Part Number Voltage 120	Part Number Voltage 240	Price
1-1/4	1-3/16	125	A	---	MBH00033*	131.95
1-1/2	1	150	A	MBH00031	MBH00035	81.60
	1	150	A	---	MBH00036*	131.50
2-5/16	1-7/16	300	A	---	MBH00038	84.80
	1-7/16	300	A	---	MBH00039*	134.70

* Heater has built-in Type J Thermocouple

All heaters have 24" high temp leads with 22" stainless steel overbraid.



I.D.	Width	Wattage	Figure	Part Number Voltage 120	Part Number Voltage 240	Price
1-1/2	1	150	B	MBH00030	MBH00034	73.25
1-3/4	1	175	B	MBH00003	MBH00012	74.10
2	1	200	B	MBH00004	MBH00013	74.10
2-1/4	1	175	B	MBH00005	---	74.45
	1-1/2	300	B	---	MBH00037	76.45
2-1/2	1	250	B	MBH00006	MBH00014	74.45
3	1	200	B	MBH00007	MBH00015	75.00
3-1/2	1	300	B	MBH00009	MBH00016	77.45

All heaters have 24" high temp leads with 22" stainless steel overbraid.



I.D.	Width	Wattage	Figure	Part Number Voltage 240	Price
1-1/2	1-1/2	275	C	MBH00019	82.05
	1-3/4	250	C	MBH00020	83.90
	2-1/2	400	C	MBH00021	84.95
	3	450	C	MBH00022	99.45
	4-1/2	600	C	MBH00023	133.05
	6	800	C	MBH00024	144.30
2-1/8	15/16	215	C	MBH00025	82.80
2-5/16	15/16	260	C	MBH00026	82.80
	1-3/8	240	C	MBH00027	84.80
2-3/4	1-1/2	260	C	MBH00028	85.35

All heaters have 24" high temp leads with 22" stainless steel overbraid.

Tempco Duraband® Heater Bands

Features:

- All heaters have 24" high temperature leads with 22" stainless steel overbraid. **Type W3**
- Heaters less than 1-1/2" wide have separate straps. **Type SE**
- Designed as one-piece expandable type, enables user to open up the heater to the diameter of the barrel for easy installation.



I.D.	Width	Wattage	Style	Part Number Voltage 120	Part Number Voltage 240	Part Number Voltage 480	Price
2-3/4	3-1/2	600	NE	MBH00040	---	---	107.75
3	1	200	SE	MBH00041	MBH00054	---	91.30
	1	250	SE	MBH00042	MBH00055	---	91.30
	1	300	SE	MBH00043	MBH00056	---	91.30
	1	400	SE	MBH00044	MBH00057	---	92.05
	1-1/2	500	NE	MBH00045	MBH00058	---	85.90
	2-1/2	300	NE	---	MBH00059	---	88.30
3-1/2	5/8	200	SE	MBH00046	MBH00060	---	97.95
	1	200	SE	MBH00047	---	---	97.95
	1-1/2	500	NE	---	MBH00061	---	85.75
4	2	625	NE	MBH00048	MBH00062	MBH00066	96.20
	3	500	NE	MBH00049	---	---	104.05
	4	1250	NE	MBH00050	MBH00063	MBH00067	125.45
4-1/2	1	300	SE	MBH00051	---	---	105.50
	2	700	NE	---	MBH00064	MBH00068	98.75
	4	700	NE	MBH00052	---	---	128.25
	4	1400	NE	MBH00053	MBH00065	MBH00069	131.15

Features:

- All heaters have 24" high temperature leads. **Type L2**
- Heaters less than 1-1/2" wide have separate straps. **Type SE**
- Designed as one-piece expandable type, enables user to open up the heater to the diameter of the barrel for easy installation.



I.D.	Width	Wattage	Style	Part Number Voltage 120	Part Number Voltage 240	Part Number Voltage 480	Price
3	1	200	SE	MBH00070	MBH00078	---	75.45
	1	250	SE	MBH00071	MBH00079	---	75.45
	1	300	SE	MBH00072	MBH00080	---	75.45
	1	400	SE	MBH00073	MBH00081	---	75.45
	1-1/2	400	NE	MBH00074	MBH00082	---	70.50
	1-1/2	450	NE	MBH00075	MBH00083	---	70.50
	1-1/2	500	NE	MBH00076	MBH00084	---	70.50
	2	500	NE	MBH00077	MBH00085	---	73.25
3-1/2	1	400	SE	---	MBH00086	---	82.10
	1-1/2	250	NE	---	MBH00087	MBH00093	69.90
	2	650	NE	---	MBH00088	---	73.45
4-15/16	2-1/2	720	NE	---	MBH00089	MBH00094	89.00
5-1/2	2-1/2	950	NE	---	MBH00090	MBH00095	94.70
5-7/8	1-1/2	675	NE	---	MBH00091	MBH00096	85.60
7-1/2	1-1/2	1000	NE	---	MBH00092	MBH00097	95.40

Tempco Duraband® Heater Bands

Features:

- All heaters have 24" high temperature leads with 22" stainless steel overbraid. **Type W1**
- Heaters less than 1-1/2" wide have separate straps. **Type SE**
- Designed as one-piece expandable type, enables user to open up the heater to the diameter of the barrel for easy installation.



I.D.	Width	Wattage	Style	Part Number Voltage 120	Part Number Voltage 240	Price
2-1/2	1-1/2	300	NE	MBH00098	---	82.60
3	1	300	SE	MBH00099	MBH00108	89.30
	1-1/2	500	NE	MBH00100	MBH00109	83.15
	2	500	NE	MBH00101	MBH00110	85.90
3-1/8	2	450	NE	---	MBH00111	87.30
3-1/4	2	400	NE	---	MBH00112	87.30
3-1/2	1-1/2	550	NE	---	MBH00113	83.75
	2	600	NE	---	MBH00114	87.30
	3	300	NE	---	MBH00115	92.55
	3	625	NE	---	MBH00116	92.55
3-3/4	1-1/2	600	NE	MBH00102	MBH00117	89.35
	2-1/2	850	NE	MBH00103	MBH00118	96.55
4	1	550	SE	---	MBH00119	101.15
	1-1/2	550	NE	---	MBH00120	89.35
4-1/8	1	400	SE	MBH00104	---	104.25
4-1/2	1	550	SE	---	MBH00121	103.50
	2	800	NE	---	MBH00122	97.50
4-3/4	3/4	150	SE	---	MBH00123	105.70
4-7/8	1-1/2	900	NE	---	MBH00124	94.60
5	1-1/2	700	NE	---	MBH00125	93.85
	1-3/4	600	NE	---	MBH00126	98.05
	2	950	NE	---	MBH00127	98.80
	2-1/2	1000	NE	---	MBH00128	103.60
5-1/2	1	550	SE	---	MBH00129	108.25
	1-1/2	500	NE	---	MBH00130	97.05
	1-1/2	900	NE	---	MBH00131	97.80
	2	500	NE	---	MBH00132	103.40
	2-3/4	620	NE	---	MBH00133	115.20
	3	1750	NE	---	MBH00134	117.40
6	1	300	SE	MBH00105	---	109.80
	1-1/2	500	NE	---	MBH00135	99.45
	1-1/2	850	NE	---	MBH00136	100.20
6-1/8	1	600	SE	MBH00106	---	115.75
6-1/4	2	500	NE	---	MBH00137	109.40
6-1/2	1-1/2	750	NE	---	MBH00138	102.45
7	1	550	SE	---	MBH00139	118.15
7-1/2	2	1500	NE	---	MBH00140	119.90
8-1/8	2	1200	NE	MBH00107	---	125.70
10	2	2000	NE	---	MBH00141	134.85

Tempco Duraband® Heater Bands

I.D.	Width	Wattage	Style	Termination	Part Number Voltage 120	Part Number Voltage 240	Part Number Voltage 480	Price
1-1/2	1	150	SB	T2	---	MBH00170	---	50.10
	1-1/2	250	NB	T2	---	MBH00171	---	42.45
	2	300	NB	T2	---	MBH00172	---	44.25
1-3/4	1	175	SB	T2	---	MBH00173	---	50.95
	1-1/2	250	NB	T2	---	MBH00174	---	43.70
	1-1/2	300	NB	T2	---	MBH00175	---	43.70
1-7/8	1	200	SB	T2	---	MBH00176	---	50.95
2	1-1/2	300	NB	T2	MBH00142	MBH00177	---	43.70
2-1/4	1	250	SB	T2	MBH00143	MBH00178	---	51.30
	2	525	NB	T2	---	MBH00179	---	46.40
2-3/8	1	100	SB	T2	---	MBH00180	---	51.30
	1	250	SB	T2	---	MBH00181	---	51.30
	2-1/2	450	NB	T3	MBH00144	---	---	48.40
2-1/2	1	225	SE	T2	---	MBH00182	---	59.80
	1	250	SE	T2	---	MBH00183	---	59.80
	1	275	SE	T2	---	MBH00184	---	59.80
	1-1/2	300	NE	T2	MBH00145	MBH00185	---	53.60
	1-1/2	350	NE	T2	MBH00146	MBH00186	---	53.60
	2-3/8	550	NE	T2	---	MBH00187	---	56.90
	2-7/8	650	NE	T3	---	MBH00188	---	64.45
	4	850	NE	T3	---	MBH00189	---	82.00
3	1	200	SE	T2	MBH00147	MBH00190	---	60.30
	1	250	SE	T2	MBH00148	MBH00191	---	60.30
	1	300	SE	T2	---	MBH00192	---	60.30
	1	350	SE	T2	---	MBH00193	---	60.30
	1	400	SE	T2	MBH00149	MBH00194	MBH00348	60.30
	1-1/2	400	NE	T2	MBH00150	MBH00195	---	54.15
	1-1/2	450	NE	T2	---	MBH00196	---	54.15
	1-1/2	500	NE	T2	MBH00151	MBH00197	---	54.15
	2	450	NE	T2	---	MBH00198	---	56.90
	2	500	NE	T2	---	MBH00199	---	56.90
3-1/8	2-1/2	650	NE	T3	---	MBH00200	---	57.30
	1	300	SE	T2	---	MBH00201	---	66.95
	1	400	SE	T2	MBH00152	MBH00202	---	66.95
3-1/4	1-1/2	400	NE	T2	---	MBH00203	---	54.75
	1-1/2	400	NE	T2	MBH00153	MBH00204	---	54.75
3-1/2	1	300	SE	T2	MBH00154	MBH00205	---	66.95
	1-1/2	325	NE	T2	---	MBH00206	---	54.75
	1-1/2	400	NE	T2	MBH00155	---	---	54.75
	1-1/2	500	NE	T2	MBH00156	MBH00207	---	54.75
	2	325	NE	T2	---	MBH00208	---	58.30
	2	500	NE	T2	MBH00157	---	---	58.30
	2	650	NE	T2	---	MBH00209	---	58.30
	2-1/2	750	NE	T3	---	MBH00210	---	59.75
3-9/16	3	1000	NE	T3	---	MBH00211	---	63.55
3-5/8	2-3/8	685	NE	T2	---	MBH00212	---	66.80
3-5/8	1-1/2	625	NE	T2	---	MBH00213	---	60.35
3-3/4	1	350	SE	T2	MBH00158	MBH00214	---	72.15

See Page 434 for Description of Heater Style and Termination

Tempco Duraband® Heater Bands

I.D.	Width	Wattage	Style	Termination	Part Number Voltage 120	Part Number Voltage 240	Part Number Voltage 480	Price
3-3/4	1-1/2	500	NE	T2	---	MBH00215	---	60.35
	1-1/2	700	NE	T2	---	MBH00216	---	60.35
	2-1/2	850	NE	T3	MBH00159	MBH00217	---	66.80
3-7/8	1-1/2	550	NE	T2	---	MBH00218	---	60.35
	2	750	NE	T2	---	MBH00219	---	64.45
3-15/16	2	600	NE	T2	---	MBH00220	MBH00349	64.45
4	1	400	SE	T2	MBH00160	MBH00221	---	72.15
	1-1/2	400	NE	T2	---	MBH00222	---	60.35
	1-1/2	550	NE	T2	---	MBH00223	---	60.35
	1-1/2	625	NE	T2	---	MBH00224	---	60.35
	1-1/2	750	NE	T2	---	MBH00225	---	60.35
	2	550	NE	T2	MBH00161	MBH00226	---	64.45
	2	800	NE	T2	---	MBH00227	---	64.45
	2-1/4	900	NE	T2	---	MBH00228	---	66.80
	2-1/2	1000	NE	T3	---	MBH00229	---	66.80
	4	1250	NE	T3	---	MBH00230	---	91.80
4-5/16	3-1/2	1210	NE	T3	---	MBH00231	---	89.15
4-1/2	1	350	SE	T2	MBH00162	MBH00232	---	74.50
	1-1/2	350	NE	T2	---	MBH00233	---	62.60
	1-1/2	400	NE	T2	---	MBH00235	---	62.60
	1-1/2	650	NE	T2	---	MBH00236	---	62.60
	2	500	NE	T2	MBH00163	MBH00237	---	67.75
	2	700	NE	T2	MBH00164	MBH00238	---	67.75
	2-1/2	1000	NE	T3	MBH00165	MBH00239	---	70.00
4-3/4	1-1/2	600	NE	T2	---	MBH00242	MBH00350	64.85
	1-1/2	650	NE	T2	---	MBH00243	---	64.85
	3	1100	NE	T3	---	MBH00244	MBH00351	80.50
4-7/8	1-1/2	900	NE	T2	---	MBH00245	---	64.85
	2	650	NE	T2	---	MBH00246	---	69.05
	2	760	NE	T2	---	MBH00247	MBH00352	69.05
	3	900	NE	T3	---	MBH00248	---	80.50
4-15/16	3	1200	NE	T3	---	MBH00249	---	80.50
5	1	400	SE	T2	---	MBH00250	---	76.70
	1-1/2	350	NE	T2	---	---	MBH00353	64.85
	1-1/2	700	NE	T2	---	MBH00251	---	64.85
	1-1/2	800	NE	T2	---	MBH00252	---	64.85
	2	1000	NE	T2	---	MBH00253	---	69.05
	2-1/2	1000	NE	T3	---	MBH00254	---	73.85
	3	1200	NE	T3	---	MBH00255	MBH00354	80.50
	3-1/4	800	NE	T3	---	---	MBH00355	93.00
	3-1/4	1250	NE	T3	---	MBH00256	---	93.00
	4	1500	NE	T3	---	MBH00257	---	101.40
5-1/8	1-1/2	900	NE	T2	---	MBH00258	---	68.05
	1-1/2	600	NE	T2	---	MBH00259	---	68.05
5-1/4	1	500	SE	T2	---	MBH00260	---	79.25
	1	600	SE	T2	---	MBH00261	MBH00356	79.25
	1-1/2	600	NE	T2	---	MBH00262	MBH00357	68.05
	1-1/2	1000	NE	T2	---	MBH00263	---	68.05

See Page 434 for Description of Heater Style and Termination

Tempco Duraband® Heater Bands

I.D.	Width	Wattage	Style	Termination	Part Number Voltage 120	Part Number Voltage 240	Part Number Voltage 480	Price
5-1/4	2	1000	NE	T2	---	MBH00264	---	74.40
	2-1/4	1300	NE	T2	---	---	MBH00358	78.35
	2-1/2	1300	NE	T3	---	MBH00265	---	78.35
	3	1700	NE	T3	---	MBH00266	---	86.20
5-1/2	1-1/2	800	NE	T2	---	MBH00267	---	68.05
5-3/4	1-1/2	600	NE	T2	---	MBH00268	---	70.45
5-7/8	3	1000	NE	T3	---	MBH00269	---	90.60
5-15/16	1-1/2	1000	NE	T2	---	MBH00270	---	70.45
6	1	500	SE	T2	---	MBH00271	---	80.80
	1-3/8	950	SE	T2	MBH00166	---	---	82.80
	1-1/2	600	NE	T2	---	MBH00272	---	70.45
	1-1/2	850	NE	T2	MBH00167	MBH00273	---	70.45
	1-1/2	900	NE	T2	---	MBH00274	---	70.45
	1-1/2	1000	NE	T2	---	MBH00275	---	70.45
	2	1200	NE	T2	---	MBH00276	---	77.65
	2-1/2	1450	NE	T3	---	MBH00277	---	81.95
3	1400	NE	T3	---	MBH00278	MBH00359	90.60	
6-1/8	1-1/2	1000	NE	T2	---	MBH00279	---	72.70
6-1/4	3	1500	NE	T3	---	MBH00280	MBH00360	94.45
5-5/16	3	1250	NE	T3	---	MBH00281	MBH00361	94.45
6-15/32	2	800	NE	T2	---	MBH00282	---	80.40
	2	1200	NE	T2	---	MBH00283	---	80.40
6-1/2	1-1/2	750	NE	T2	---	MBH00284	---	72.70
	1-1/2	900	NE	T2	---	MBH00285	---	72.70
	1-1/2	1200	NE	T2	---	MBH00286	---	72.70
	2	1000	NE	T2	---	MBH00287	---	80.40
	2-1/2	1200	NE	T3	---	MBH00288	MBH00362	85.55
6-5/8	1-1/2	815	NE	T2	---	MBH00289	---	76.35
	1-1/2	1150	NE	T2	---	MBH00290	---	76.35
6-3/4	1-1/2	600	NE	T2	---	MBH00291	---	76.35
	1-1/2	815	NE	T2	---	MBH00292	---	76.35
	1-1/2	1000	NE	T2	---	MBH00293	---	76.35
	1-1/2	1150	NE	T2	---	MBH00294	---	76.35
	2	1300	NE	T2	---	MBH00295	---	85.35
	4	2600	NE	T3	---	MBH00296	---	121.50
7	1	750	SE	T2	---	MBH00297	---	89.15
	1-1/2	950	NE	T2	---	MBH00298	---	76.35
	1-1/2	1000	NE	T2	---	MBH00299	---	76.35
	2-1/2	1000	NE	T3	---	MBH00300	---	92.70
	3	1650	NE	T3	---	MBH00301	MBH00363	98.65
7-3/32	3-1/2	1200	NE	T3	---	MBH00302	MBH00364	117.95
	3-1/2	1650	NE	T3	---	MBH00303	MBH00365	117.95
7-1/8	1-1/2	1200	NE	T2	---	MBH00304	---	79.05
	3-1/2	1650	NE	T3	---	MBH00305	---	117.95
7-1/4	2	900	NE	T2	---	MBH00306	---	88.70
7-1/2	1	700	SE	T2	MBH00168	---	---	91.70
	1-1/2	800	NE	T2	---	MBH00307	---	79.05
	1-1/2	1000	NE	T2	---	MBH00308	---	79.05

See Page 434 for Description of Heater Style and Termination

Tempco Duraband® Heater Bands

I.D.	Width	Wattage	Style	Termination	Part Number Voltage 120	Part Number Voltage 240	Part Number Voltage 480	Price
7-1/2	2	1500	NE	T2	---	MBH00309	---	88.70
	3	1800	NE	T2	---	MBH00310	MBH00366	102.40
7-5/8	1-1/2	1000	NE	T2	---	MBH00311	---	81.45
	3	2000	NE	T2	---	MBH00312	---	107.75
7-3/4	1-1/2	1000	NE	T2	---	MBH00313	---	81.45
7-7/8	1-1/2	750	NE	T2	---	MBH00314	---	81.45
	1-1/2	1000	NE	T2	---	MBH00315	---	81.45
	3	2000	NE	T3	---	MBH00316	---	107.75
8	1	850	SE	T2	---	MBH00317	---	94.10
	1-1/2	950	NE	T2	---	MBH00318	---	81.45
	1-1/2	1200	NE	T2	---	MBH00319	MBH00367	81.45
	1-1/2	1400	NE	T2	---	MBH00320	---	81.45
	2	1500	NE	T2	---	MBH00321	MBH00368	91.35
8-1/4	3	2250	NE	T3	---	MBH00322	MBH00369	107.75
	2	1800	NE	T2	---	MBH00323	MBH00370	94.50
8-1/2	4	3000	NE	T3	---	MBH00324	MBH00371	134.20
	1-1/2	1200	NE	T2	---	MBH00325	---	83.25
8-3/4	2	1600	NE	T2	---	MBH00326	---	94.50
	3	2000	NE	T3	---	MBH00327	MBH00372	115.45
9	1-1/2	1300	NE	T2	---	MBH00328	---	86.30
	1-1/2	1500	NE	T2	---	MBH00329	MBH00373	86.30
	2	1800	NE	T2	---	MBH00330	---	97.45
9-1/2	1-1/2	1600	NE	T2	---	MBH00331	---	88.35
	2	1800	NE	T2	---	MBH00332	---	100.60
	3	2000	NE	T3	---	MBH00333	MBH00374	120.15
9-5/8	3	2000	NE	T3	---	MBH00334	MBH00375	124.95
	3	3000	NE	T3	---	MBH00335	MBH00376	124.95
9-3/4	2	2000	NE	T2	---	MBH00336	---	103.65
10	1-1/2	1400	NE	T2	---	MBH00337	---	112.35
10-1/4	3	2400	NE	T3	---	MBH00338	MBH00377	134.40
	4	3000	NE	T3	---	MBH00339	MBH00378	161.80
10-1/2	1-1/2	1500	NE	T2	---	MBH00340	---	97.25
	3	2400	NE	T3	---	MBH00341	MBH00379	134.40
11	1-1/2	1600	NE	T2	---	MBH00342	---	97.25
	2	2000	NE	T2	---	MBH00343	---	112.00
11-1/4	3	2400	NE	T3	---	MBH00344	---	143.50
11-1/2	1-1/2	800	NE	T2	MBH00169	---	---	102.05
	1-1/2	1800	NE	T2	---	MBH00345	---	102.05
12	1-1/2	2000	NE	T2	---	MBH00346	---	102.05
	2	2300	NE	T2	---	MBH00374	MBH00380	117.60

See Page 434 for Description of Heater Style and Termination