

## Single Zone 15 & 30 Amp Main Frames

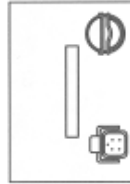
Model Number	Amps	Frame Connectors	Price
MFLD1NOPO	15	NEMA - in 5 Pin - out	250.00
MFLD1COPO	15	Clamp - in 5 Pin - out	250.00
MFHD1COCO	30	Clamp - in Clamp - out	470.00

### Top Views

MFLD1NOPO



MFLD1COPO



MFHD1COCO

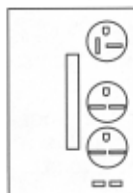


## Dual Zone 15 Amp Main Frames

Model Number	Amps	Frame Connectors	Price
MFLD2NONF	15	NEMA - in NEMA - out	400.00
MFLD2COPO	15	Clamp - in 5 Pin - out	320.00
MFLD2NOPO	15	NEMA - in 5 Pin - out	320.00

### Top Views

MFLD2NONF



MFLD2COPO



MFLD2NOPO

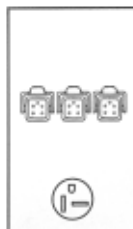


## Tri-Zone 15 Amp Main Frames

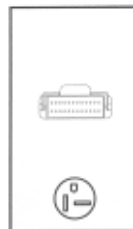
Model Number	Amps	Frame Connectors	Price
MFLOD3NOPO	15	NEMA - in 5 Pin - out	400.00
MFLOD3NOPT	15	NEMA - in TriZone - out	400.00
MFLOD3COPO	15	Clamp - in 5 Pin - out	400.00
MFLOD3COPT	15	Clamp - in TriZone - out	400.00

### Back Views

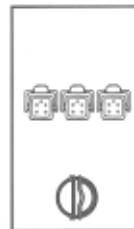
MFLOD3NOPO



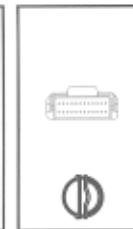
MFLOD3NOPT



MFLOD3COPO



MFLOD3COPT



\*Controller modules  
not included.

### Mold End Combo Connector for Tri-Zone System



Part #TPT03-A  
Price.....\$55.50

### Combo Cable for Tri-Zone System Power & Thermocouple

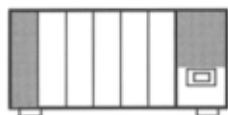


Part Number	Length	Price
TPTC10	10 ft.	144.00
TPTC20	20 ft.	180.00

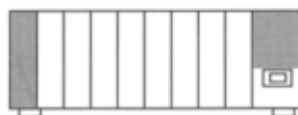
## Main Frames for 15-Amp Modules

The configurations illustrated below provide a wide selection of zone capacities to suit almost any control application. The 5, 8 and 12 zone frames use individual frame sections. The 16 thru 48 zone frames use 2, 3 or 4 frame sections rigidly fastened together into one prewired integral unit which requires only one main AC power input connection.

\*NOTE:  
Part #MFLCD mainframes are factory wired for communications. To operate with communications you must use a RMC module shown on page 320.



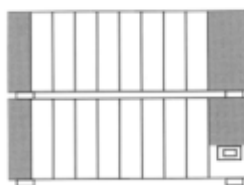
**5 Zone**  
**MFL0D05-00...\$598.00**  
**MFLCD05-00...\$745.00**



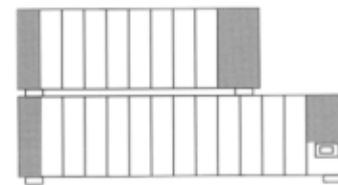
**8 Zone**  
**MFL0D08-00...\$720.00**  
**MFLCD08-00...\$885.00**



**12 Zone**  
**MFL0D12-00...\$805.00**  
**MFLCD12-00...\$1040.00**



**16 Zone**  
**MFL0D16-00...\$1315.00**  
**MFLCD16-00...\$1580.00**



**20 Zone**  
**MFL0D20-00...\$1465.00**  
**MFLCD20-00...\$1805.00**

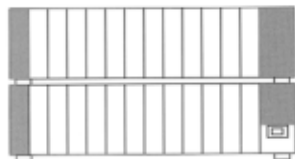
\*NOTE: Blank panel(s) should be ordered to provide for heat dissipation and to cover unused zones in frames. Combination frames to accommodate both 15 and 30 amp modules are available on special order.

## Main Frame Dimensions

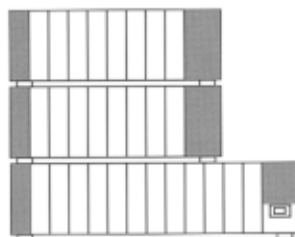
MFL Main Frame	Height	Depth	Width	MFH Main Frame
1- & 2-zone	9-1/4"	10"	7"	1-zone
3-zone	9-1/4"	12-3/4"	7"	N/A
5-zone	8-7/8"	11-1/2"	16-1/8"	2-zone
8-zone	8-7/8"	11-1/2"	22-1/8"	3-zone
12-zone	8-7/8"	11-1/2"	30-1/4"	5- & 6-zone

\*For main frames over 12 zones add dimensions of stacked cabinets.

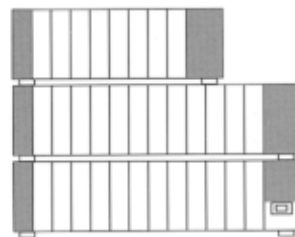
# Main Frame Configurations



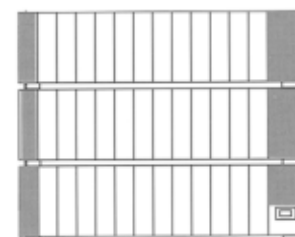
**24 Zone**  
MFL0D24-00...\$1580.00  
MFLCD24-00...\$1945.00



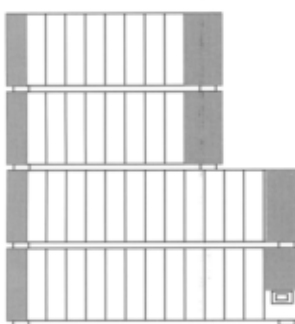
**28 Zone**  
MFL0D28-00...\$2180.00  
MFLCD28-00...\$2620.00



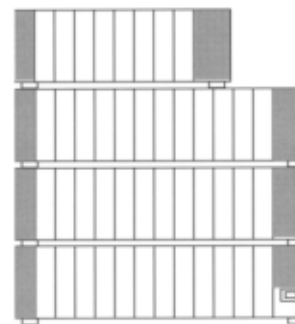
**32 Zone**  
MFL0D32-00...\$2290.00  
MFLCD32-00...\$2785.00



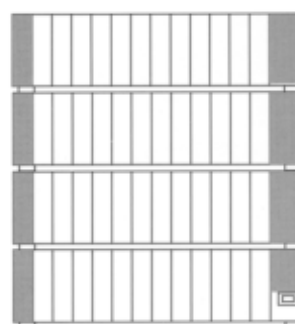
**36 Zone**  
MFL0D36-00...\$2420.00  
MFLCD36-00...\$2910.00



**40 Zone**  
MFL0D40-00...\$3020.00  
MFLCD40-00...\$3605.00



**44 Zone**  
MFL0D44-00...\$3120.00  
MFLCD44-00...\$3720.00



**48 Zone**  
MFL0D48-00...\$3220.00  
MFLCD48-00...\$3810.00

**Notes on Mainframes**  
Mainframe cabinets may be stacked to form a permanent, integrated unit with a single AC power input and breaker. Up to 48 control modules (zones) may be accommodated.

5-, 8-, and 12-zone mainframes have a breaker rating of 50 amps and a maximum total wattage of 20 kW. Mainframes for 16 zones and over have a breaker ratings of 70 amps and 29 kW.

## Main Frames For 30 Amp Modules

The 4 configurations illustrated below provide 2,3,5 or 6 zones of 30 amp control for higher wattage applications. The Current/Voltage Monitor option will be factory installed and must be ordered at the same time as mainframe.

**2 Zone**  
MFH0D02-00...\$1030.00  
MFHCD02-00...\$1105.00



**5 Zone**  
MFH0D05-00...\$1460.00  
MFHCD05-00...\$1620.00



**3 Zone**  
MFH0D03-00...\$1130.00  
MFHCD03-00...\$1215.00




**6 Zone**  
MFH0D06-00...\$1525.00  
MFHCD06-00...\$1715.00

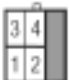
# RMT Series Mainframes

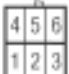
## Mainframes for 2 Zone Modules, 15 Amps per Slot


The configurations illustrated below provide a wide selection of space-saving zone capacities to suit almost any control application. The 5, 8, and 12 slot frames use individual frame sections with a 50 amp main circuit breaker. The 16 and 24 slot frames use two sections rigidly fastened together with a 70 amp main circuit breaker.

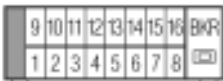
### MFT Mainframe Configurations


**1-Slot**  Part #MFT-D-01-01-00  
Price - \$230.00

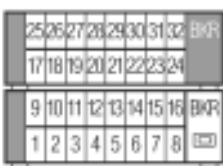
**2-Slot**  Part #MFT-D-02-02-00  
Price - \$485.00

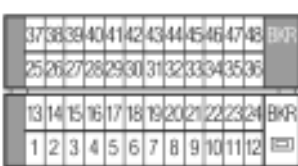
**3-Slot**  Part #MFT-D-03-03-00  
Price - \$585.00

**5-Slot**  Part #MFT-D-05-05-00  
Price - \$650.00

**8-Slot**  Part #MFT-D-08-08-00  
Price - \$1055.00

**12-Slot**  Part #MFT-D-012-12-00  
Price - \$1255.00

**16-Slot**  Part #MFT-D-16-16-00  
Price - \$1815.00

**24-Slot**  Part #MFT-D-24-24-00  
Price - \$2495.00

### Available MFT Power & T/C Connector Arrangements

(2) Single Zone Combination Power & T/C Connector mounted on the top of frame

(1) 5 Zone T/C Connector mounted on the rear of frame  
(1) 5 Zone Power Connector mounted on the rear of frame

(1) 8 Zone T/C Connector mounted on the rear of frame  
(1) 8 Zone Power Connector mounted on the rear of frame

(1) 12 Zone T/C Connector mounted on the side of frame  
(1) 12 Zone Power Connector mounted on the side of frame

(2) 8 Zone T/C Connectors  
(1) mounted on the side of frame  
(1) mounted on the rear cover of frame  
(2) 8 Zone Power Connectors  
(1) mounted on the side of frame  
(1) mounted on the rear cover of frame

(2) 12 Zone T/C Connectors  
(1) mounted on the side of frame  
(1) mounted on the rear cover of frame  
(2) 12 Zone Power Connectors  
(1) mounted on the side of frame  
(1) mounted on the rear cover of frame

(4) 8 Zone T/C Connectors  
Mounting per frame, 2 frames stacked  
(1) mounted on the side of frame  
(1) mounted on the rear cover of frame  
(4) 8 Zone Power Connectors  
Mounting per frame, 2 frames stacked  
(1) mounted on the side of frame  
(1) mounted on the rear cover of frame

(2) 12 Zone T/C Connectors  
Mounting per frame, 2 frames stacked  
(1) mounted on the side of frame  
(1) mounted on the rear cover of frame  
(2) 12 Zone Power Connectors  
Mounting per frame, 2 frames stacked  
(1) mounted on the side of frame  
(1) mounted on the rear cover of frame