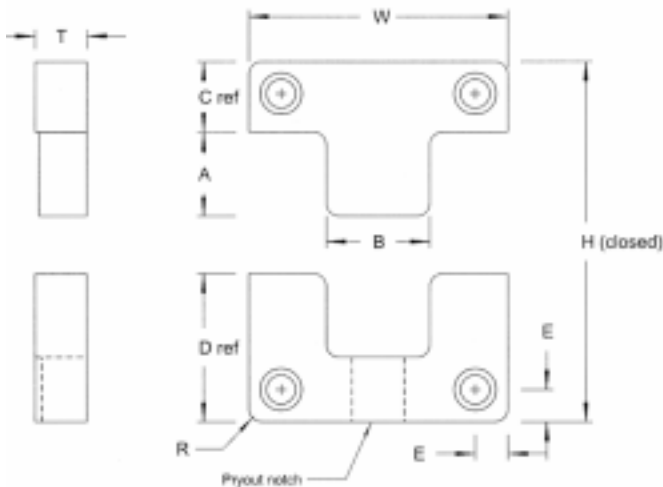
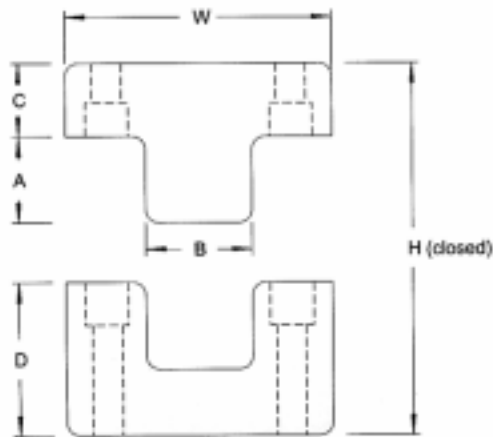
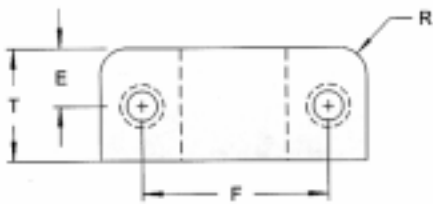


Titanium Nitrided or Boron Nitrided Side Locks



- **Titanium Nitrided Side Locks**
- Provides positive alignment between cavities and cores.
- Dissimilar steels, heat treated to different hardnesses to prevent galling, wear, and binding.
- Male: AISI 06, Hardened to 60-62 Rc, Black Oxide Coated.
- Female: AISI S7, Hardened to 50-52 Rc, Titanium Nitrided (80 Rc).
- **Boron Nitrided Side Locks**
- Same as above except:
 - Female: Boron Nitrided.
- Standard with grease grooves.
- The best value in side locks.
- one year warranty against galling.

Titanium Nitrided Price	Titanium Nitrided Part #	W +.0000 -.0004	H +.000 -.005	A	B .0001/.0003 clearance per side	C	D	E +.010 -.010	T	R Pocket Radius	SHCS	Boron Nitrided Part #	Boron Nitrided Price
119.00	SL100	1.000	2.000	.530	.500	.875	1.125	.250	.375	.187	10-32 x 1/2	SL100-BN	112.00
129.00	SL125	1.250	2.000	.560	.500	.875	1.125	.250	.490	.187	8-32 x 5/8	---	---
144.00	SL150	1.500	1.750	.560	.563	.875	0.875	.250	.500	.187	8-32 x 5/8	---	---
144.00	SL200	2.000	2.250	.660	.750	.875	1.375	.312	.500	.250	10-32 x 5/8	SL200-BN	136.00
188.00	SL300	3.000	2.750	1.130	1.250	.875	1.875	.375	.750	.250	1/4-20 x 3/4	SL300-BN	177.00
234.00	SL400	4.000	3.750	1.130	1.500	1.375	2.375	.500	1.000	.500	3/8-16 x 1	SL400-BN	220.00
283.00	SL500	5.000	4.250	1.630	2.000	1.375	2.875	.625	1.250	.500	1/2-13 x 1-1/4	SL500-BN	266.00
388.00	SL600	6.000	4.250	1.750	2.000	1.375	2.875	.625	1.500	.500	1/2-13 x 1-1/2	SL600-BN	365.00



BMS Top Locks provide positive guidance between cavities and cores and will not bind due to unequal thermal expansion of the mold halves. Top Locks have large corner radii and are designed for standard mold plate thicknesses for easy machining and installation from parting line.

Material:

Male: O6 Hardened to 60-62 Rc, Black Oxide coated.

Female: S7 Hardened to 50-52 Rc, Titanium Nitrided to 80 Rc.

Part Number	W +.0000 -.0004	H	A	B .0001/.0003 clearance per side	C +.000 -.002	D +.000 -.002	E +.010 -.010	F +.010 -.010	T	R Pocket Radius	SHCS Male	SHCS Female	Price
MTL125A	1.250	1.125	0.380	0.438	0.500	0.625	0.375	0.875	0.750	.250	8-32 X 5/8	8-32 X 3/4	132.50
MTL200A	2.000	1.500	0.50	0.750	0.625	0.875	0.563	1.375	1.125	.375	1/4-20 X 3/4	1/4-20 X 1	176.50
MTL300A	3.000	2.125	0.75	1.125	0.875	1.250	0.875	2.250	1.750	.500	5/16-18 X 1	5/16-18 X 1-1/4	212.50

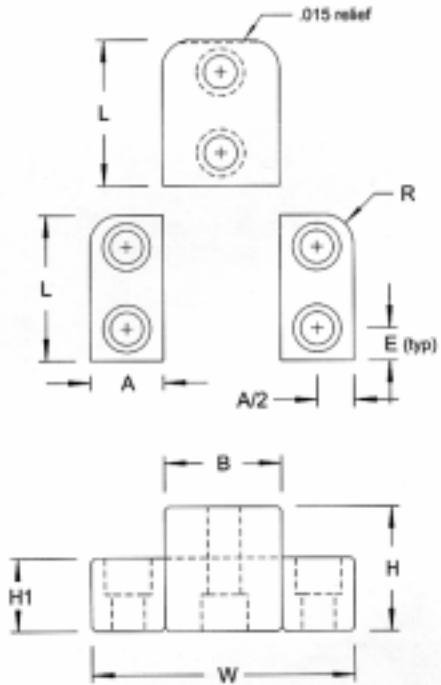
Mold Guide Locks

BMS Mold Guide Locks provide positive guidance between cavities and cores and will not bind due to unequal thermal expansion of the mold halves. The three piece design allows for easy installation and fitting of inserts.

Material:

Male: O6 Hardened to 60-62 Rc,
Black Oxide Coated.

Females (2): S7 Hardened to 50-52 Rc,
Titanium Nitrided to 80 Rc.



Part Number	W	L +.000 -.010	A +.0000 -.0003	B +.0000 -.0003	H +.000 -.010	H1 +.000 -.005	E +.010 -.010	R Pocket Radius	SHCS Male	SHCS Female	Price
MGL150	1.500	1.000	.500	.500	.85	.500	.25	.187	10-32 X 1	10-32 X 5/8	78.00
MGL250	2.500	1.500	.750	1.000	1.35	.750	.31	.250	1/4-20 X 1-1/2	1/4-20 X 7/8	84.00
MGL350	3.500	2.000	1.000	1.500	1.73	1.000	.44	.375	3/8-16 X 2	3/8-16 X 1-1/4	115.00
MGL375	4.500	2.500	1.250	2.000	2.10	1.250	.56	.500	1/2-13 X 2-1/4	1/2-13 X 1-1/2	145.00