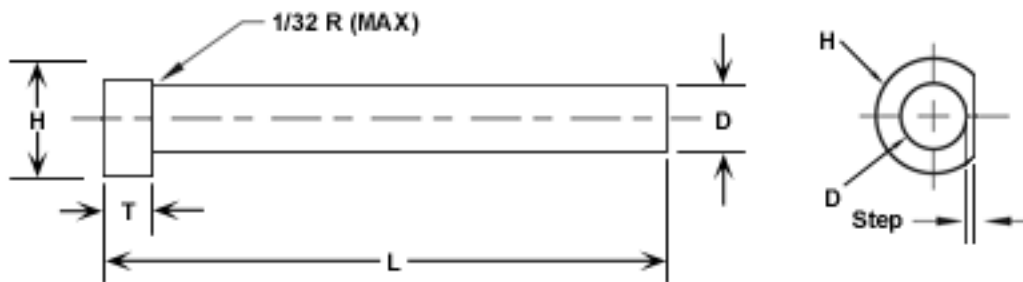


# D-Head Ejector Pins



- Constructed from premium hotwork die steel.
- Ion nitrided surface to 65-75 Rc.
- Head annealed to 30-35 Rc.

Step Table	
1/8" to 5/16"	3/8" to 1"
Step = .006 +.002 -.002	Step = .007 +.003 -.003

(D) Pin Dia. -.0003 -.0008	(H) Head Dia.	(T) Head Thick +.000 -.002	Length 6"	Price	Length 10"	Price	Length 14"	Price	Length 18"	Price	Length 25"	Price
1/8	1/4	1/8	EJD125X6	3.20	EJD125X10	3.70	EJD125X14	3.80	---	---	---	---
9/64	1/4	1/8	EJD140X6	3.45	EJD140X10	3.60	EJD140X14	3.90	---	---	---	---
5/32	9-32	5/32	EJD156X6	3.60	EJD156X10	3.95	EJD156X14	4.10	EJD156X18	4.80	EJD156X25	5.10
3/16	3/8	3/16	EJD187X6	3.40	EJD187X10	4.00	EJD187X14	4.50	EJD187X18	4.90	EJD187X25	5.35
7/32	13/32	3/16	---	---	---	---	EJD218X14	4.80	---	---	---	---
1/4	7/16	3/16	EJD250X6	3.70	EJD250X10	5.05	EJD250X14	5.15	EJD250X18	5.60	EJD250X25	6.20
5/16	1/2	1/4	EJD312X6	4.40	EJD312X10	6.20	EJD312X14	6.45	EJD312X18	6.95	EJD312X25	7.45
3/8	5/8	1/4	EJD375X6	5.10	EJD375X10	7.25	EJD375X14	7.75	EJD375X18	11.20	EJD375X25	12.85
1/2	3/4	1/4	EJD500X6	9.20	EJD500X10	11.05	EJD500X14	11.45	EJD500X18	12.20	EJD500X25	13.85
5/8	7/8	1/4	EJD625X6	11.65	EJD625X10	14.10	EJD625X14	16.45	EJD625X18	18.45	EJD625X25	21.45
3/4	1	1/4	EJD750X6	15.20	EJD750X10	19.20	EJD750X14	21.25	EJD750X18	25.35	EJD750X25	36.35
1	1-1/4	1/4	EJD1000X6	25.95	EJD1000X10	29.80	EJD1000X14	33.10	EJD1000X18	46.15	EJD1000X25	55.95